



VEHICLE / PEDESTRIAN COLLISIONS

HRM: January 1 to December 31, 2014

DISCLAIMER: All figures presented in this report reflect the information held on HRP systems at the time of data extraction and are subject to change without notice.

Summary

- 320 vehicle/pedestrian/bicycle collisions were **reported** in the January 1-December 31, 2014 period in Halifax Regional Municipality.
- Of these collisions, 58 involved bicycles.
- The remaining 262 incidents were strictly vehicle/pedestrian collisions, with 269 pedestrian victims.

- **TOTAL VEHICLE/PEDESTRIAN COLLISIONS IN HRM: 262**
- **TOTAL VEHICLE/PEDESTRIAN VICTIMS IN HRM: 269**

Note: This report presents strictly vehicle/pedestrian collisions and excludes those incidents involving bicycles.

Snapshot

January – December 2014	
Month	# Incidents
January	27
February	23
March	22
April	11
May	11
June	19
July	16
August	13
September	22
October	20
November	39
December	39
TOTAL YTD	262

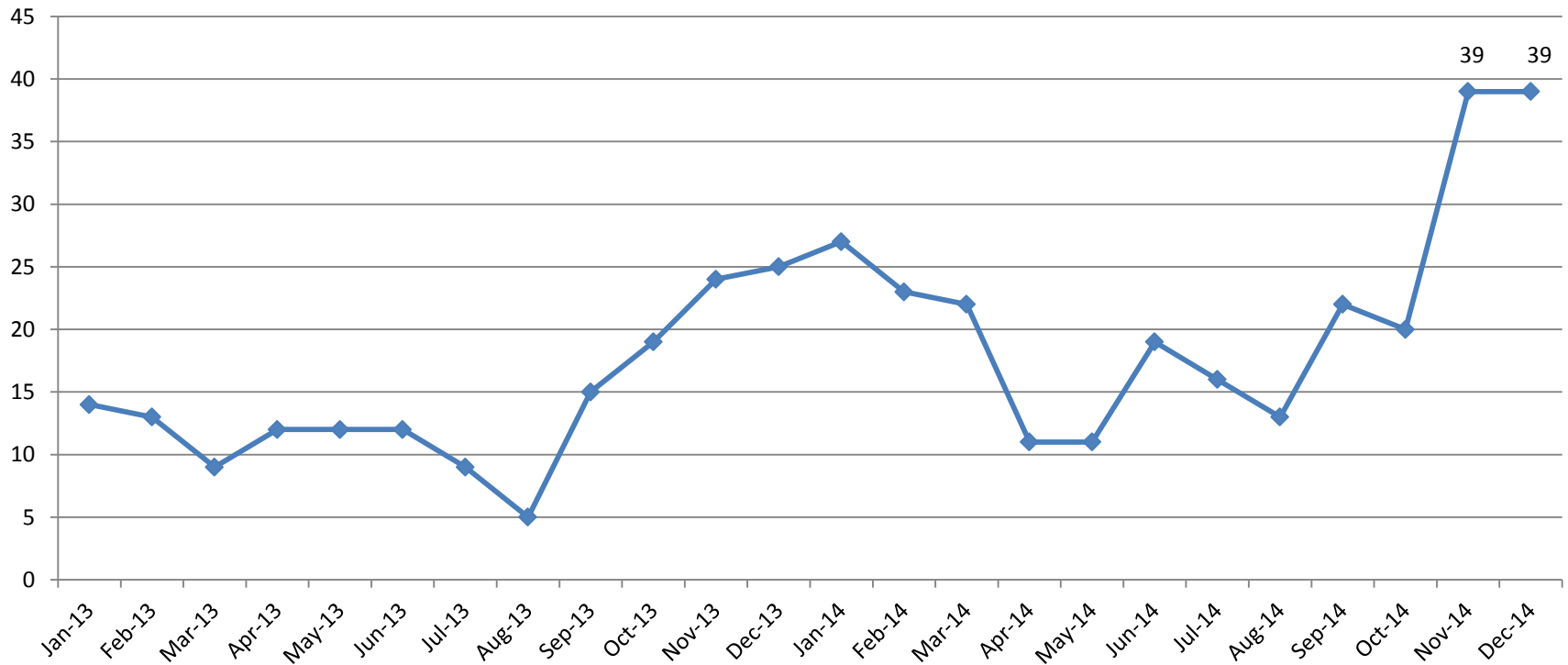
January – December 2014	
Type*	# SOTs
Driver	105
Pedestrian	16
Pending / SUI	1
No SOT	140
TOTAL	262

* Excludes SOTs unrelated to collision
(e.g., no insurance)

Trends

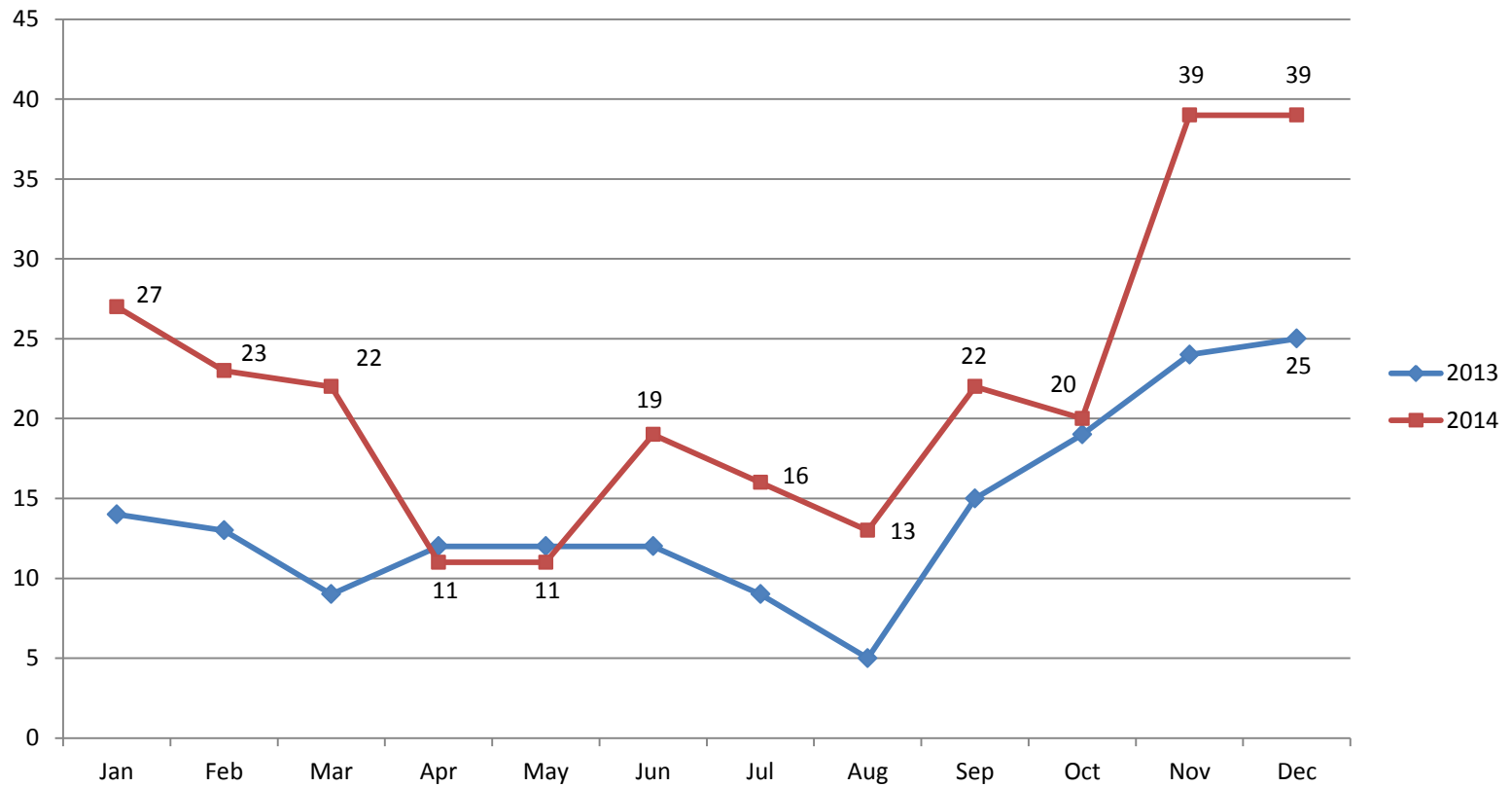
In 2013 the number of vehicle/pedestrian collisions increased gradually throughout the Fall and Winter months. A similar trend occurred in 2014, although November and December saw sharp increases over previous months.

Vehicle/Pedestrian Collisions
January 2013 – December 2014



Trends

Vehicle/Pedestrian Collisions
2013 vs 2014



Divisions & Districts

HRP

All HRP divisions had a higher number of reported vehicle/pedestrian collisions in Jan-Dec 2014 compared to Jan-Dec 2013. There was a 60% increase in collisions in 2014 compared to 2013 across HRP.

RCMP Halifax District

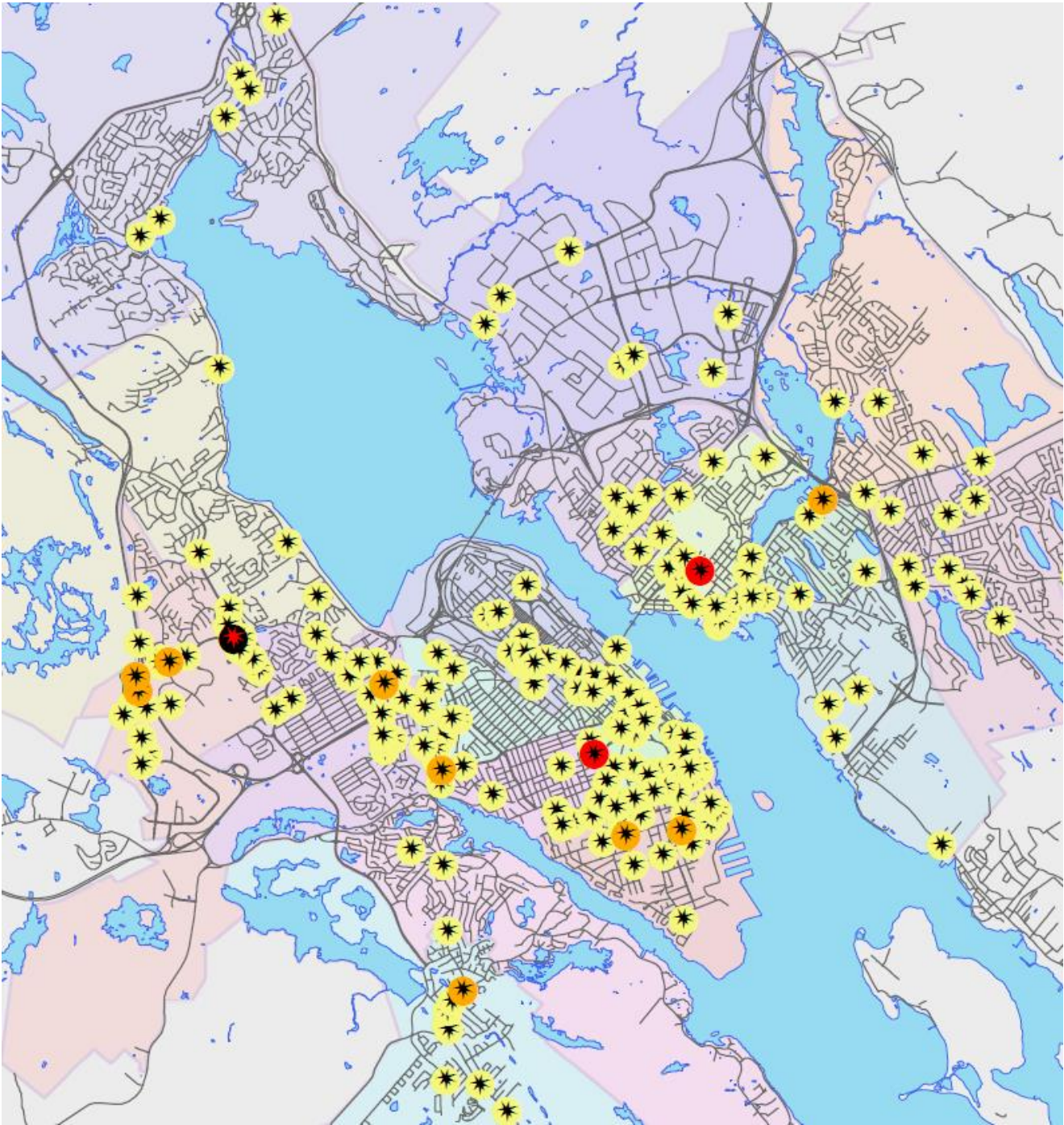
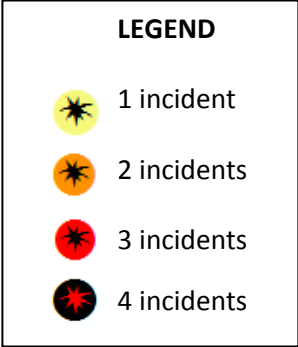
RCMP Halifax District saw a 20% increase in the number of collisions in 2014 compared to 2013. One third of the 2014 collisions occurred in December (8 collisions). Sackville had over twice as many incidents in 2014 compared to the previous year.

HRM

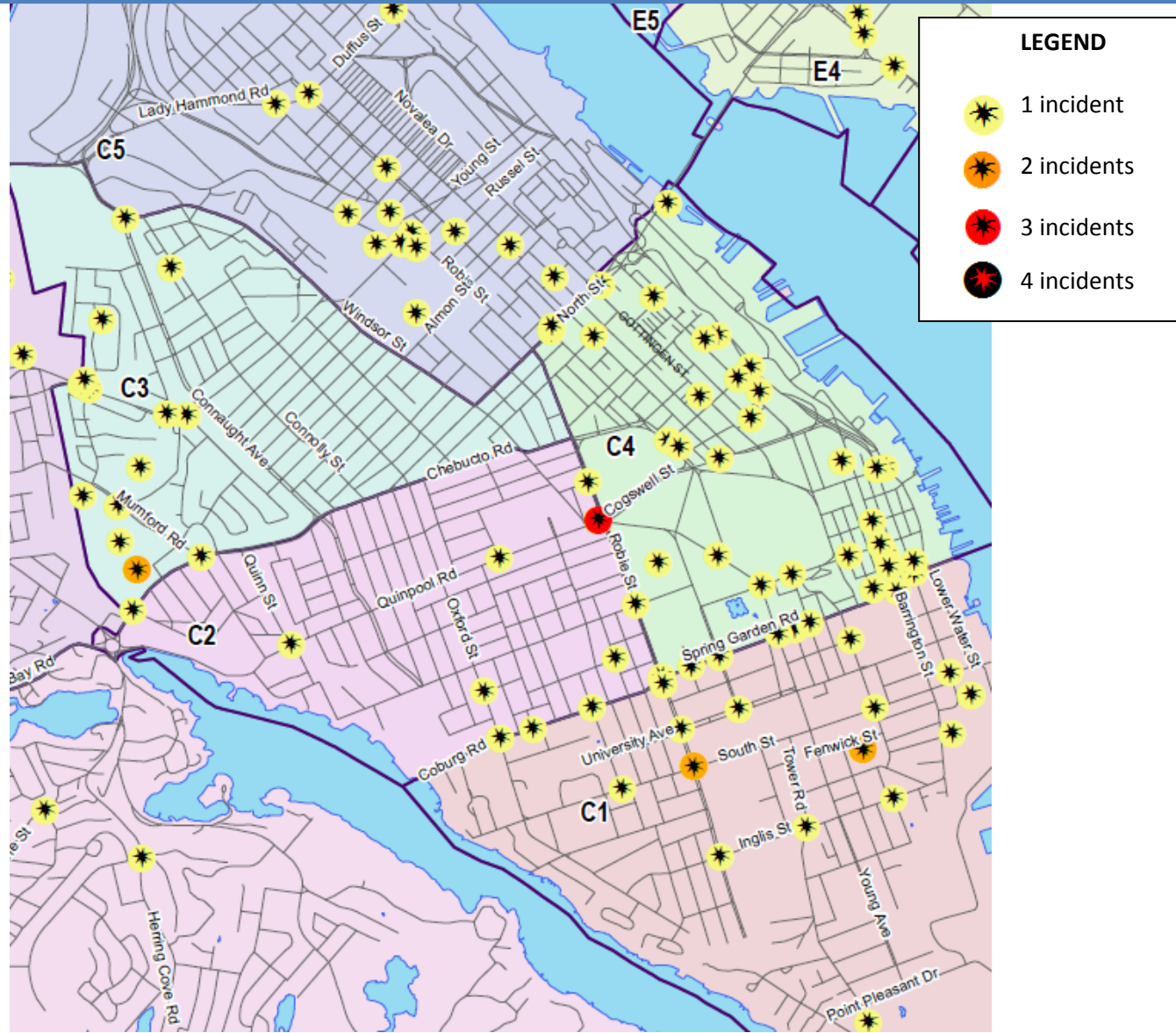
There was a 55% increase in the number of reported incidents in 2014 compared to 2013 in HRM, with 93 more incidents in 2014.

January – December 2014			
DIVISION/DISTRICT	2013	2014	% Change
Central	63	102	↑ 61.9%
East	35	64	↑ 82.9%
West	51	72	↑ 41.2%
HRP	149	238	↑ 59.7%
Cole Harbour	7	6	↓ 14.3%
Sackville	6	15	↑ 150.0%
Musquodoboit Hbr.	0	0	0.0%
North Central	0	0	0.0%
Sheet Harbour	0	0	0.0%
Tantallon	7	3	↓ 57.1%
RCMP	20	24	↑ 20.0%
HRM TOTAL	169	262	↑ 55.0%

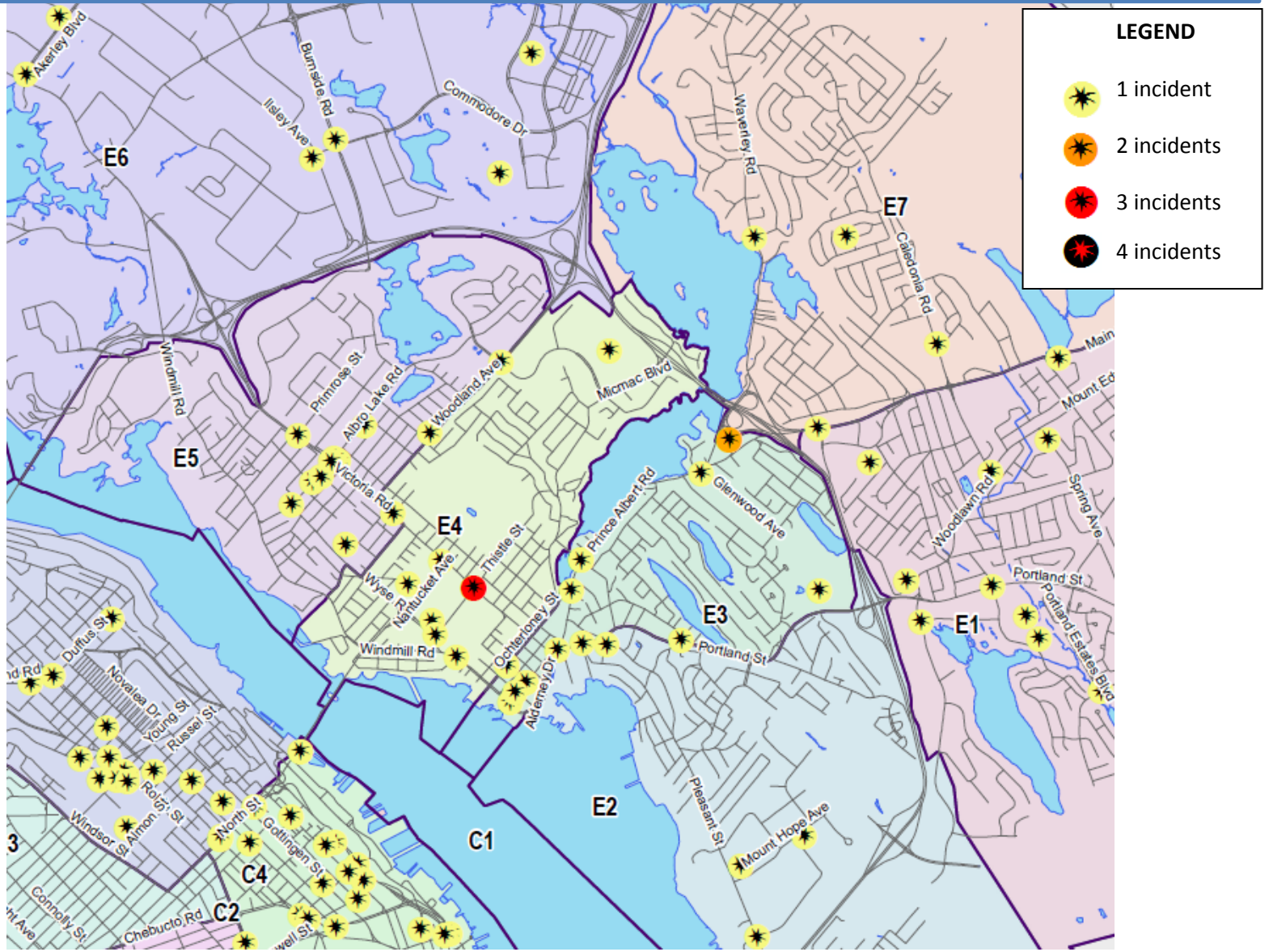
HRP Area



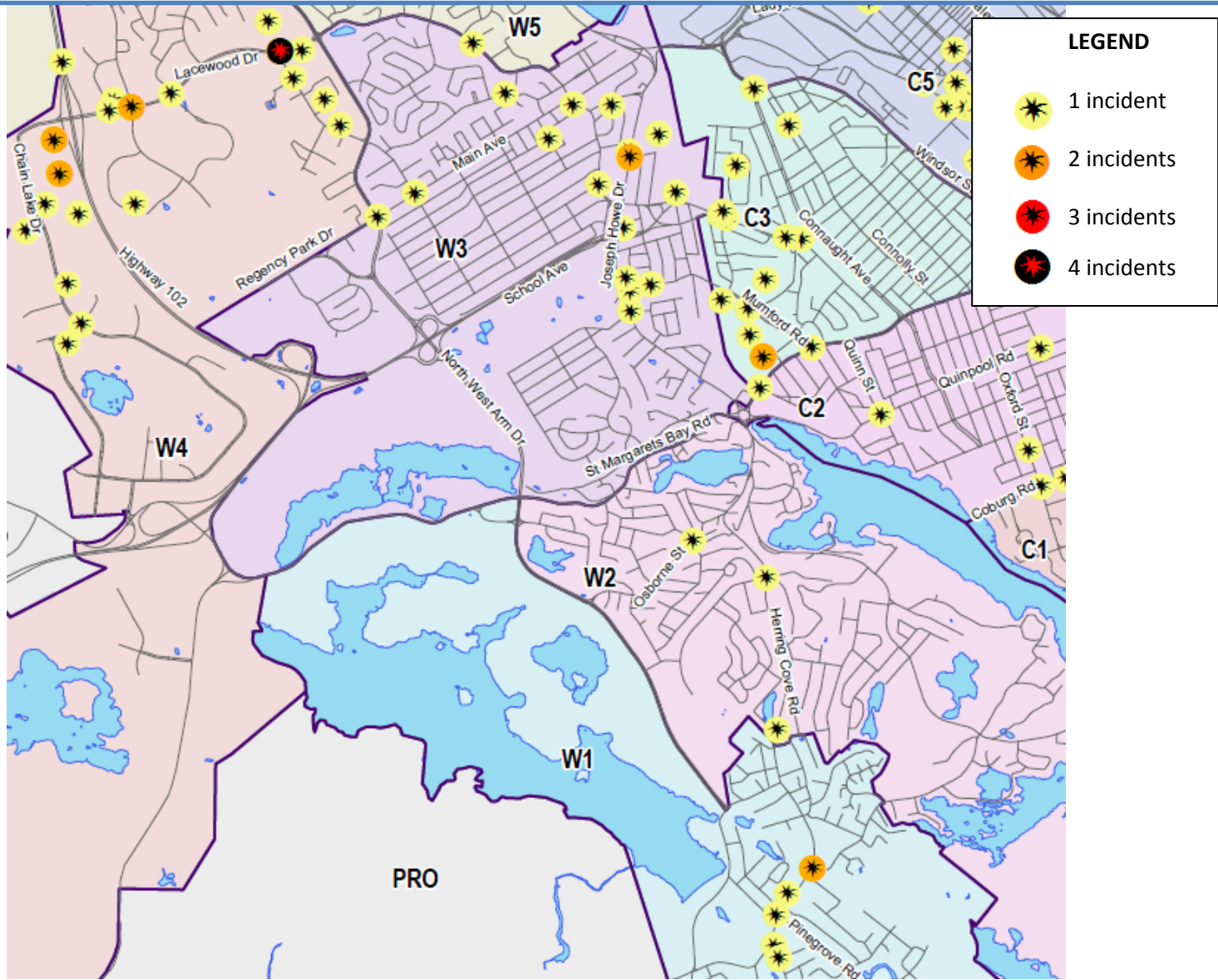
Central Division



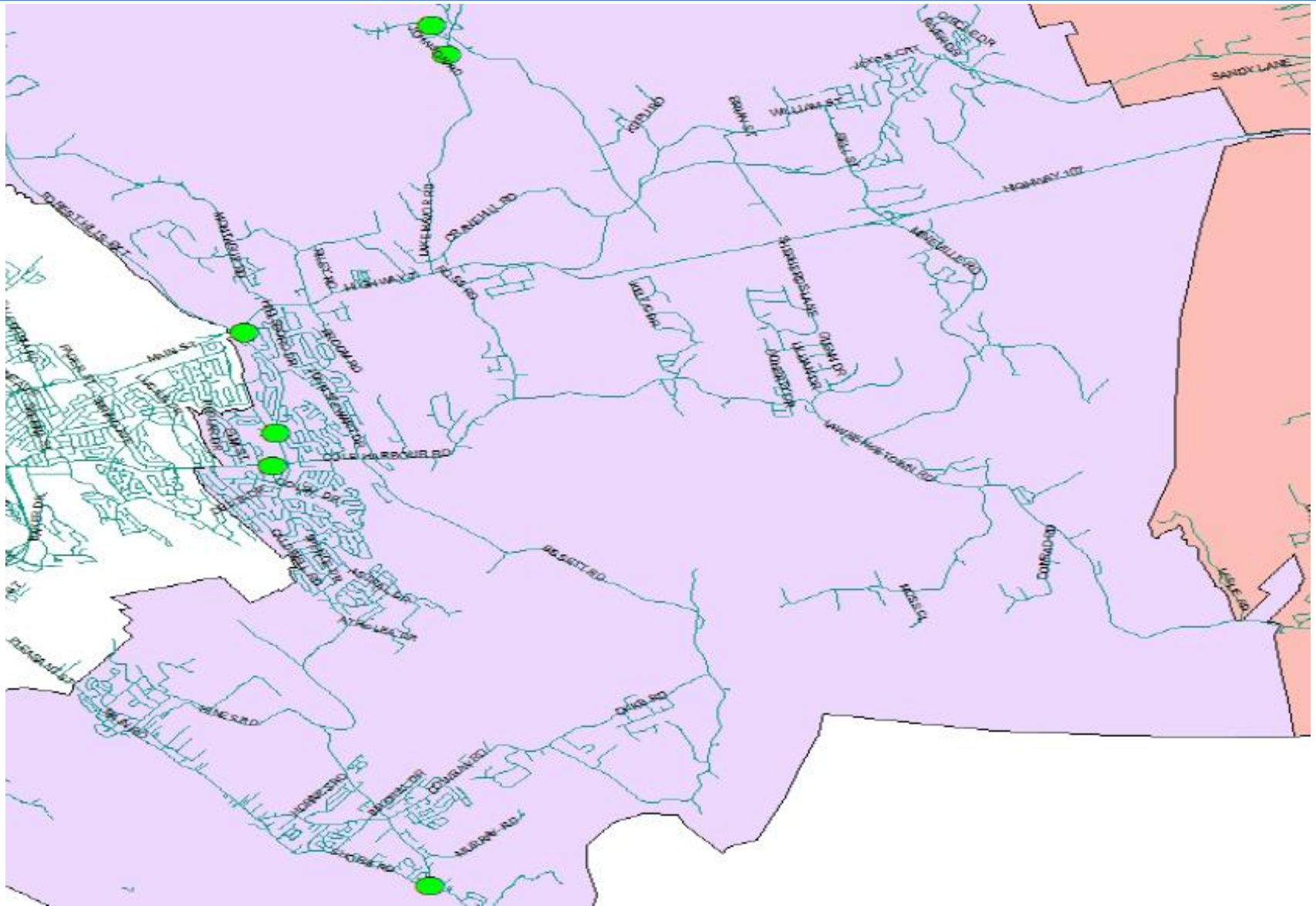
East Division



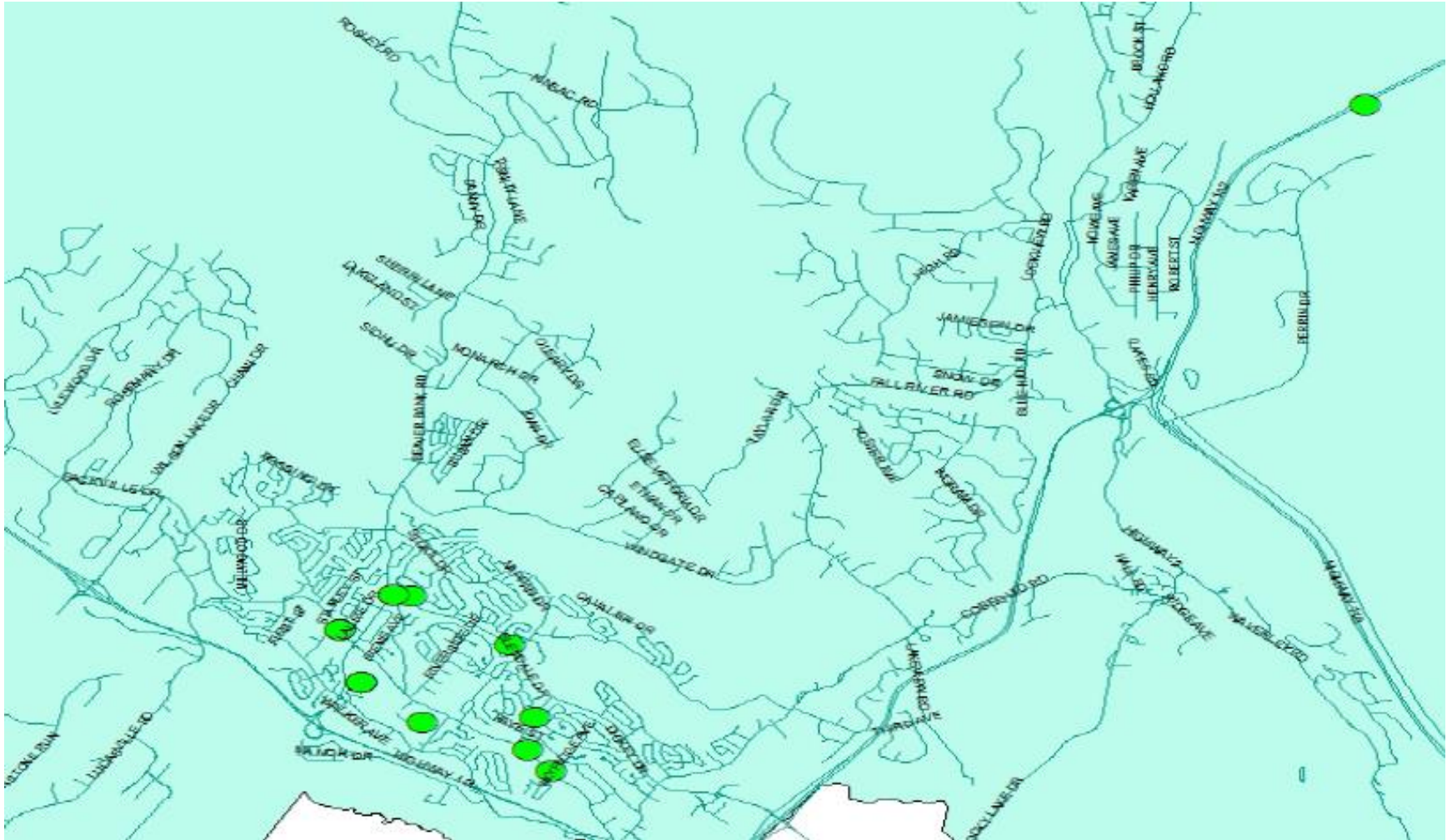
West Division



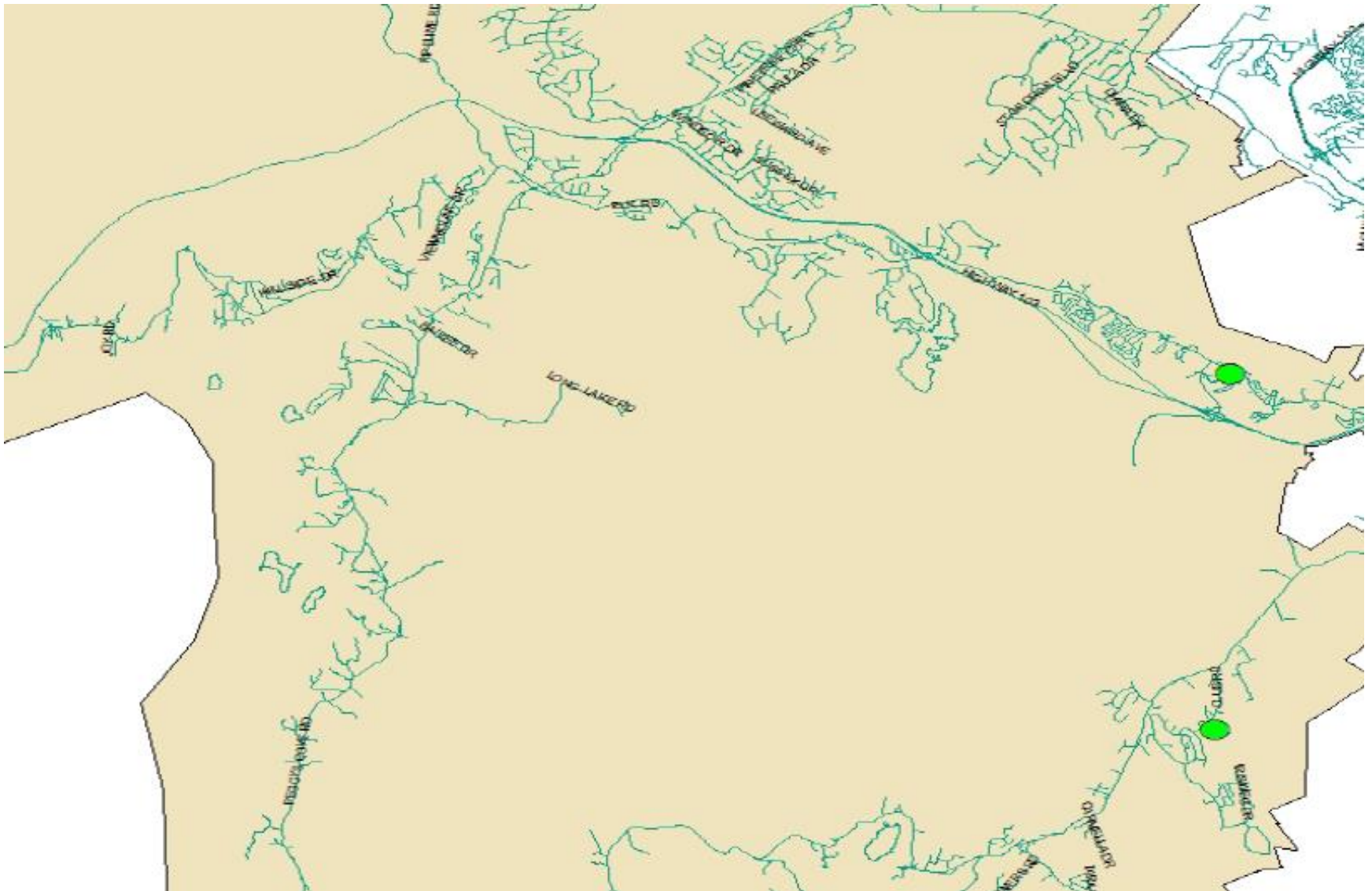
Cole Harbour



Sackville



Tantallon



Collision Types

In both 2013 and 2014 the majority of reported vehicle/pedestrian collisions occurred in crosswalks.

The proportion of collisions that took place in parking lots decreased in 2014 compared to 2013, although the number of incidents in parking lots remained steady.

January – December 2014		
COLLISION TYPE	2013	2014
Crosswalks	95 (56%)	156 (60%)
Parking Lots	42 (25%)	41 (16%)

Injuries

84% of the 269 pedestrian victims experienced either no injury or minor injury in the reported incidents between January and December 2014.

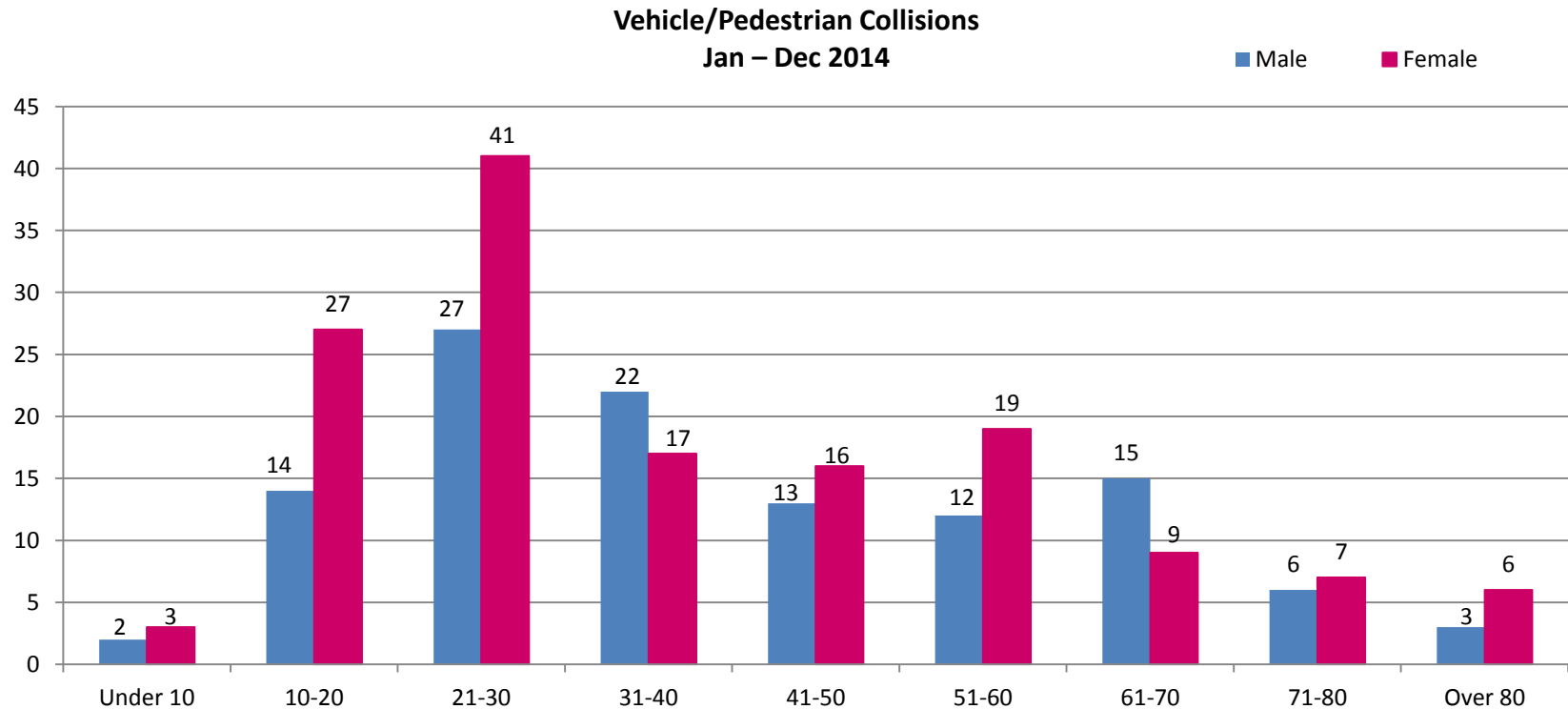
HRM saw four fatalities in 2014.

Two drivers reported minor injuries.

January – December 2014		
INJURY TYPE (PEDESTRIANS)	#	%
No Injury	96	35.7%
Minor	129	48.0%
Moderate	29	10.8%
Serious	10	3.7%
Fatality	4	1.5%
Unknown	1	0.3%
TOTAL	269	

Pedestrian Characteristics

- 26% of all pedestrian victims were in the 21-30 years age range; 59% were 40 years of age or younger.
- 56% of victims were female. Note: Excludes 1 case where victim sex was unknown.

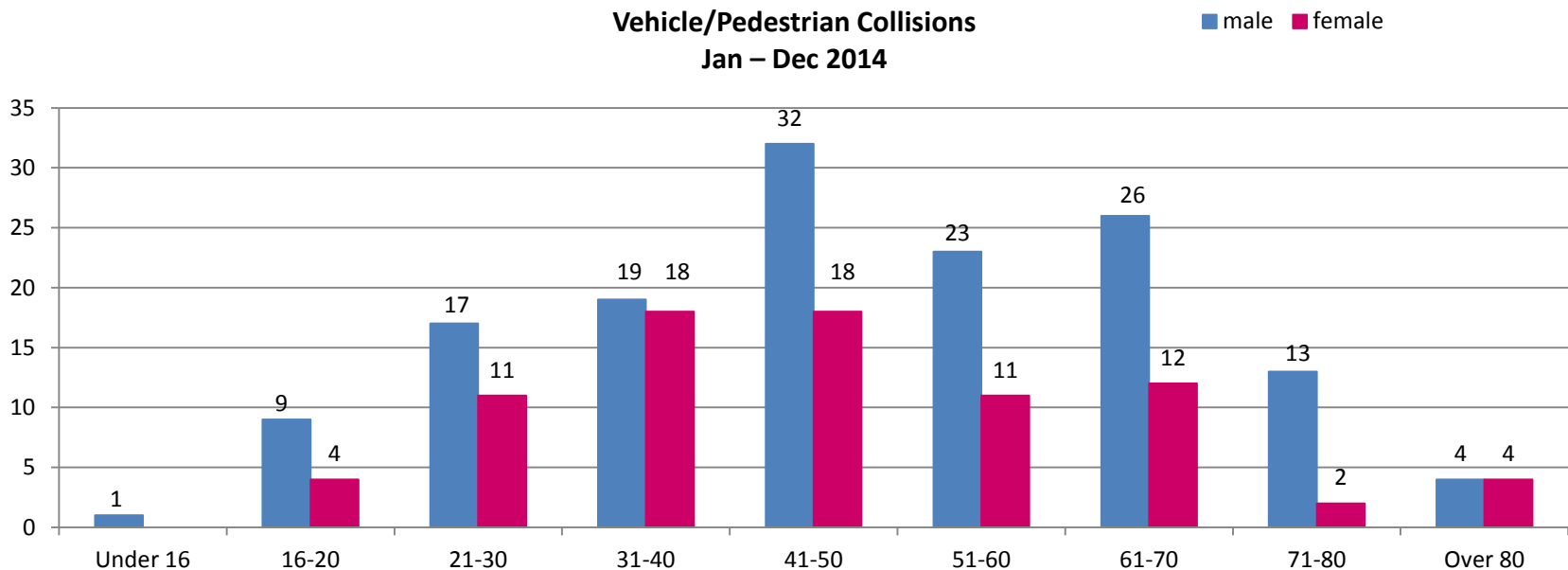


* Above chart and figures exclude 10 cases where victim age unknown

Driver Characteristics

Males accounted for approx. 65% of drivers involved in the reported vehicle/pedestrian collisions during the Jan-Dec 2014 period. Note: Excludes 16 cases where driver sex was unknown.

This is in contrast to the proportion of males of approximate driving age in HRM, which is nearly 48% according to the HRM 2011 census.



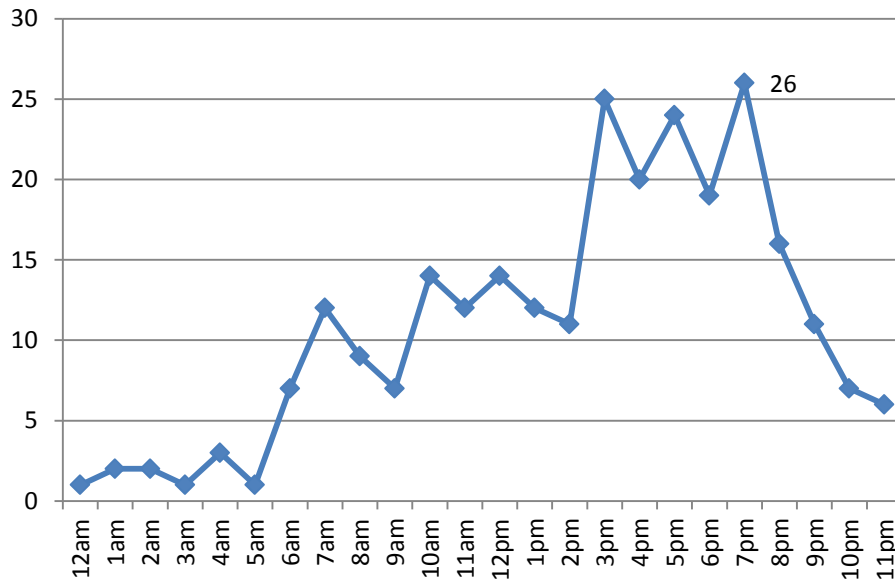
* Above chart excludes 38 cases where driver sex and/or age unknown

Peak Collision Times

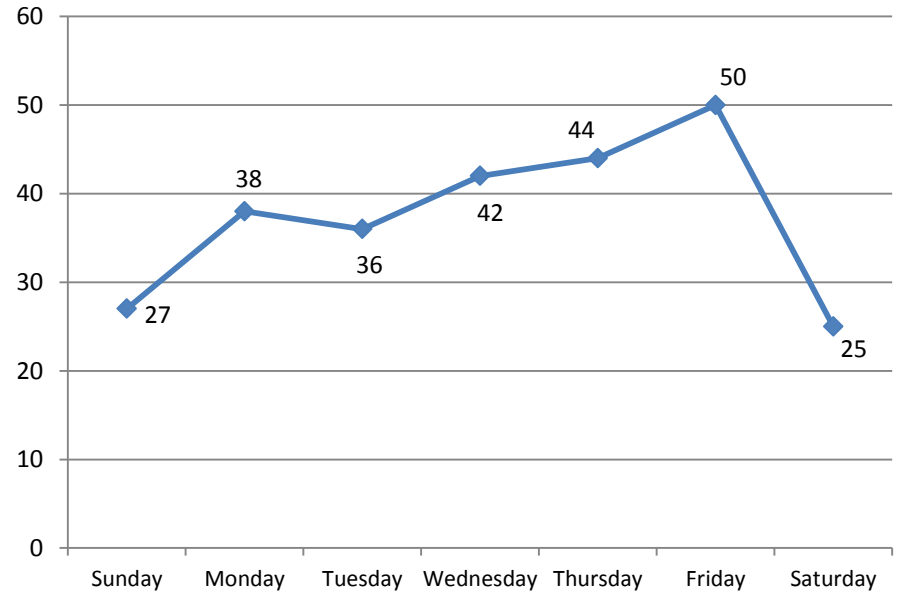
Reported vehicle/pedestrian collisions peaked during the 3-8pm time period during Jan-Dec 2014, with 44% occurring during this timeframe.

Fridays were the most common days for vehicle/pedestrian collisions.

Time of Day
Jan - Dec 2014



Day of Week
Jan - Dec 2014



Weather & Lighting Conditions

57% of the reported collisions in 2014 occurred during clear and/or sunny weather conditions, and 24% happened during rainy and/or foggy conditions.

57% of the collisions took place during daylight.

38% of the collisions took place during daylight with clear and/or sunny weather conditions.

Note: excludes 8 cases where weather conditions unknown.

