



SCHOOL REVIEW PROCESS

Impact Assessment Report Central Spryfield Elementary School

For more information, please contact: Jill McGillicuddy, 464-2000 ext.2277

TABLE OF CONTENTS

1.0 Introduction	4
2.0 School Information	5
2.1 School Name	5
2.2 School Configuration	5
2.3 School Location	5
2.4 Administration	5
2.5 Population Patterns	5
2.5.1 Projection Methodology	5
2.5.2 Halifax Regional Municipality Historical and Projected Population	6
2.5.3 South Western HRM Planning Area Historical and Projected Population	7
2.6 Enrolment	9
2.6.1 Historical and Projected Enrolment for HRSB 1998/1999 to 2017/2018	9
2.6.2 J.L Ilsley High Family Historical and Projected Enrolment by Grade	10
2.6.3 Central Spryfield Elementary School Historical and Projected Enrolments	10
2.6.4 Central Spryfield Elementary School In and Out of Boundary Details	10
2.6.5 Central Spryfield Elementary School Registered Enrolment for September 2010	11
2.7 Capital Construction Planning	11
2.7.1 Halifax Regional Municipality Regional Plan	11
2.7.2 HRM Facility Master Plan	12
2.7.3 Community Visioning	12
2.7.4 Proposed Development	12
2.8 Physical Condition of Building	12
2.8.1 Condition of Building Envelope, Interior and Systems	12
2.8.2 Indoor Air Quality and Environmental Issues	12
2.8.3 Costs Associated with Maintenance, Repair and Operation	13
2.8.4 Barrier Free Accessibility to Building and Grounds	13
2.9 Building Use	
2.9.1 Floor plan	14
2.9.2 Building Details	16
2.9.3 Teaching Spaces and Current Usage	16
2.9.4 Excess Teaching Spaces	17
2.9.5 Central Spryfield Elementary School Boundary	17
3.0 Impact Analysis	
3.1 Capability to Deliver Public School Program	19
3.1.1 Facility Program Delivery Review	19
3.1.2 Public School Programming	20
3.2 Educational Benefits	20
3.3 Transportation	21
3.4 Extra-Curricular Activities	21
3.5 Operational and Capital Requirements	21
3.5.1 Completed Capital Projects at Central Spryfield Elementary School 2006-2010	21
3.5.2 Immediate Operating Needs (5 years)	22
3.5.3 Capital Investments on Current Building	22
3.6 Property Service Efficiencies	22
3.7 Impact on the Community	22
3.8 Community Use of the School	23

3.9 Impact of Potential Consolidation (if applicable)	23
4.0 Proposed Receiving School Information	24
4.1 School Name	24
4.2 School Location	24
4.3 Administration	24
4.4 Enrolment	24
4.4.1 Elizabeth Sutherland School Historical and Projected Enrolments	24
4.4.2 Elizabeth Sutherland School In and Out of Boundary Details	24
4.4.3 Elizabeth Sutherland Registered Enrolment for September 2010	25
4.4.4 Impact of the Review Outcome on Elizabeth Sutherland School	25
4.5 School Configuration	25
4.6 Physical Condition of the Building	25
4.6.1 Facility Utilization	25
4.6.2 Condition of Building Structure and System	25
4.6.3 Costs Associated With Maintenance and Operation	26
4.6.4 Operation and Availability of Accessibility Ramps, Elevators, Accessible Playgrounds	26
4.7 Building Use	26
4.7.1 Excess Space	26
4.7.2 Teaching Spaces and Current Usag	27
4.7.3 Impact of Increased Number of Students on Building Usage	27
4.8 Transportation	28
4.9 Proposed Attendance Boundary	28

Supplementary Information

Building Audit and Expenditure Plan for Central Spryfield Elementary and Elizabeth Sutherland
Halifax Regional School Board Facilities Master Plan (pending approval – tabled March 2011)
Halifax Regional Municipality Regional Plan
Halifax Regional Municipality Facilities Master Plan

1.0 INTRODUCTION

Recently, the Halifax Regional School Board has undertaken a 10 year facility master planning process which resulted in a staff report and recommendations which were presented to the Governing Board in February 2010 (<http://www.hrsb.ns.ca/files/Downloads/pdf/reports/2009-2010/February/10-01-1236.pdf>). The Governing board requested the facility master plan be prepared and presented in smaller components.

**It was moved and seconded (Conrod/Finlayson) that the Board request staff to develop an approach or process that would divide the capital construction master plan into more manageable components---for example, area-by-area or family-by-family, and that staff review this approach or process, including a timeline, with the Board before it begins.
(CARRIED)**

During the 2010-2011 school year, staff prepared a facility master plan that is divided by family of schools. The plan outlines the historical information, demographics, feeder system – existing and proposed, and requested capital project for each area. The staff report and proposed facility master plan was tabled at the Board meeting of March 30, 2011.

The Capital Plan has identified a number of schools that should be considered for review as part of the ongoing planning process. Catchment areas that are experiencing enrolment decline provide opportunities to consolidate populations into existing infrastructure, renovated or replacement schools.

Central Spryfield Elementary School has been identified for possible consolidation with Elizabeth Sutherland School. The potential receiving school, Elizabeth Sutherland, would not require capital improvements to accommodate the potential student population.

The information in this report has been compiled according to the Provincial school review regulations and outlines information for the School Review Committee to consider regarding possible impacts of the Central Spryfield Elementary School review.

2.0 SCHOOL INFORMATION

2.1 SCHOOL NAME

Central Spryfield Elementary School

2.2 SCHOOL CONFIGURATION

Primary to Grade 6

Regular Program

2.3 SCHOOL LOCATION

364 Herring Cove Rd

Halifax, NS B3R 1V8

2.4 ADMINISTRATION

Principal: Sara Walker

Vice Principal: Cindy Astephan

2.5 POPULATION PATTERNS

2.5.1 Projection Methodology

Paradigm Shift Inc.

Currently, the Board has the advantage of reviewing projections as prepared by two demographic systems. The Imagine Our Schools consultants submitted projected demographics as prepared by Paradigm Shift Inc. The methodology that was applied included the cohort-survival method combined with the residual method.

The cohort survival method applies historical census data and projects future population based on assumptions about births, deaths, and migration. The residual method is derived from a calculation of population between two points in time for which population data is available using the Cohort Survival Method. Additionally, the consultants worked closely with the Halifax Regional Municipality in determining approved/potential development areas.

Baragar Demographics

The Halifax Regional School Board has purchased planning software from Baragar Demographics and as part of the licensing agreement, the company provides the Board with projections for each school on a yearly basis.

Baragar Demographics applies a similar methodology as Paradigm Shift Inc. Their data analysis includes:

- Analysis of yearly birth records;
- Determining the number of children who reside in a boundary by accessing the Universal Child Care Benefit tax records and Canada Child Tax Benefit records on a yearly basis;
- Applying census information such as women of child bearing years, generally in the age cohorts of 25-29, 30-34, and 35-39; and
- Applying a historical migration rate (+/-) of the boundary.

Upon comparison, the projections as prepared by each company are relatively close. Paradigm Shift has not been asked for updated projections since 2009, resulting in stale-dated data in later years. Baragar Demographics provides yearly projections and as such is the projection software package that will be utilized on a go forward basis.

2.5.2 Halifax Regional Municipality Historical and Projected Population

Historical

- The total population of Halifax Regional Municipality (HRM) increased by 8.8% from 1996 to 2006; however, during this same period the age 5 to 19 population decreased by 0.9%.
- The age 0 to 4 population has decreased significantly from 6.6% of the total population in 1996 to 4.9% of the total population in 2006.

Projected

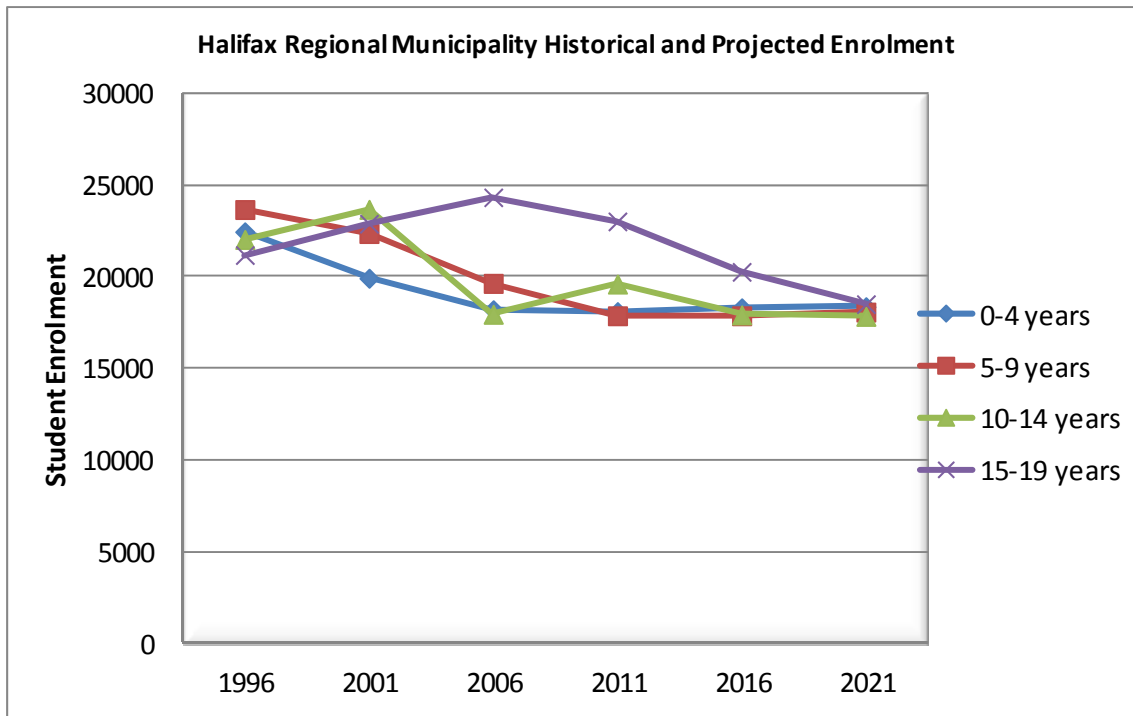
- The age 5 to 19 population comprised 17.8% of the total population in 2006, this value is estimated to steadily decline to 13.4% in 2021.
- The age 5 to 19 population will decrease due to the lower age 0 to 4 population that will move into the older age cohorts.
- The age 0 to 4 population is expected to remain stable due to a projected value of approximately 3800 live births per year.

Halifax Regional Municipality Historical and Projected Population

Age Cohort	1996	2001	2006	2011	2016	2021
0 to 4	22,460	19,925	18,205	18,104	18,311	18,368
5 to 9	23,675	22,365	19,645	17,957	17,873	18,080
10 to 14	22,040	23,685	22,325	19,608	17,924	17,842
15 to 19	21,190	22,905	24,340	23,025	20,274	18,510
20 to 24	25,570	26,560	28,120	29,842	28,868	25,938
25 to 29	27,950	26,440	26,015	27,578	29,262	28,261
30 to 34	33,195	27,600	25,850	25,461	27,025	28,676
35 to 39	31,980	32,850	27,405	25,677	25,294	26,852
40 to 44	28,080	31,645	32,745	27,336	25,601	25,214
45 to 49	25,765	28,070	31,565	32,675	27,327	25,569
50 to 54	19,075	25,525	28,235	31,741	32,913	27,674
55 to 59	14,155	18,335	25,065	27,778	31,229	32,402
60 to 64	12,305	13,670	18,235	24,898	27,819	31,262
65 to 69	10,595	11,840	13,210	17,525	23,918	26,896
70 to 74	9,415	9,715	11,010	12,327	16,254	22,172
75 to 79	7,055	8,060	8,560	9,677	10,854	14,197
80 to 84	4,610	5,535	6,475	6,924	7,771	8,719
85 to 89	2,325	2,880	3,735	4,420	4,758	5,301
90 and over	1,230	1,505	1,935	2,476	3,014	3,400
Total Population	342,670	359,110	372,675	385,029	396,289	405,333

Sources: Statistics Canada (historical), Environmental Design and Management Ltd.

Figures do not include Census under-count.



2.5.3 South West HRM Planning Area Historical and Projected Population

Historical Population

- The total population of the Eastern Central HRM planning area increased by 13.3% from 1996 to 2006.
- During this same period the age 5 to 19 population increased by 7.4%.
- The age 0 to 4 population decreased by 9% in the same time frame.

Projected Population

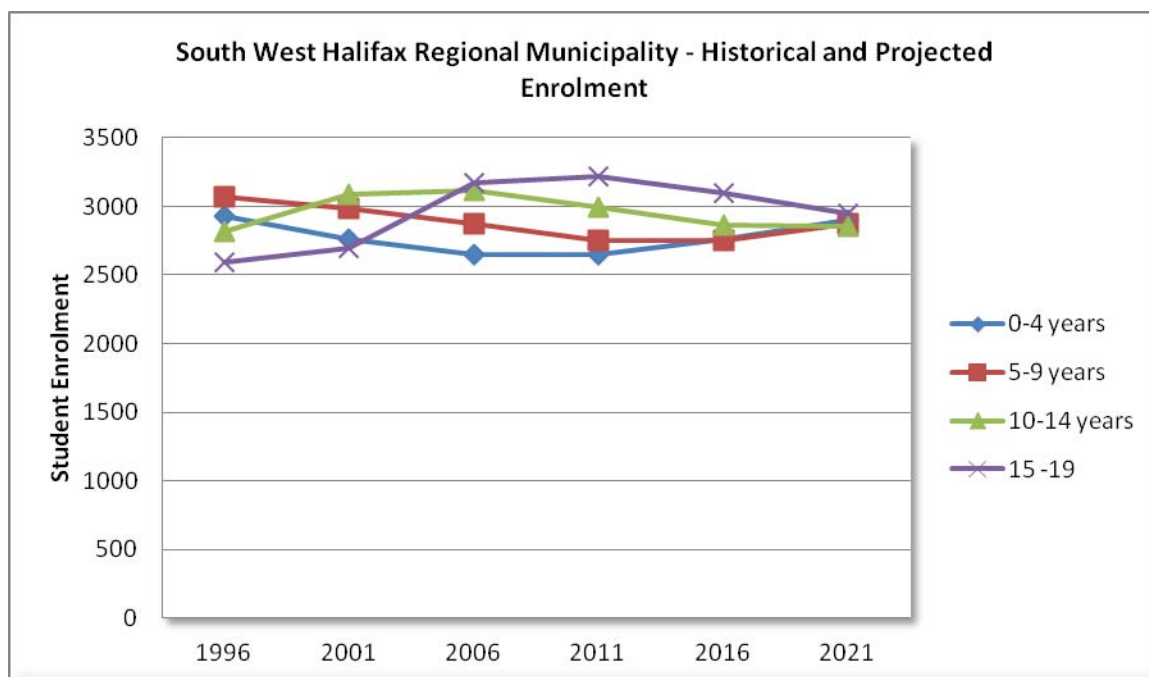
- The age 5 to 19 population comprised 20.0% of the total population in 1996 and remained relatively steady at 19.2% of the total population in 2006. This value is estimated to steadily decline to 14.7% in 2021.

South West Halifax Regional Municipality Planning Area

Historical and Projected Population (Sir John A Macdonald High and J.L Ilsley High Families of Schools)

Age Cohort	1996	2001	2006	2011	2016	2021
0 to 4	2,925	2,760	2,645	2,653	2,765	2,902
5 to 9	3,070	2,985	2,870	2,754	2,755	2,870
10 to 14	2,820	3,085	3,115	2,993	2,861	2,855
15 to 19	2,595	2,695	3,175	3,217	3,099	2,952
20 to 24	2,455	2,120	2,350	2,771	2,747	2,587
25 to 29	2,880	2,700	2,465	2,676	3,116	3,134
30 to 34	3,945	3,485	3,300	3,041	3,256	3,749
35 to 39	4,060	4,225	3,855	3,640	3,361	3,576
40 to 44	3,545	4,145	4,550	4,201	3,948	3,652
45 to 49	3,125	3,490	4,340	4,789	4,460	4,182
50 to 54	2,420	3,105	3,695	4,573	5,080	4,783
55 to 59	1,820	2,440	3,285	3,948	4,861	5,435
60 to 64	1,510	1,785	2,425	3,258	3,934	4,837
65 to 69	1,300	1,380	1,710	2,315	3,120	3,780
70 to 74	1,135	1,220	1,315	1,622	2,179	2,941
75 to 79	795	955	1,085	1,167	1,429	1,909
80 to 84	495	650	780	883	946	1,141
85 to 89	280	345	440	522	592	682
90 and over	150	185	230	285	343	387
Total population	41,325	43,755	47,630	51,308	54,852	58,304

Sources: Statistics Canada (historical), Environmental Design and Management Ltd (projected).
 Figures do not include Census under-count.



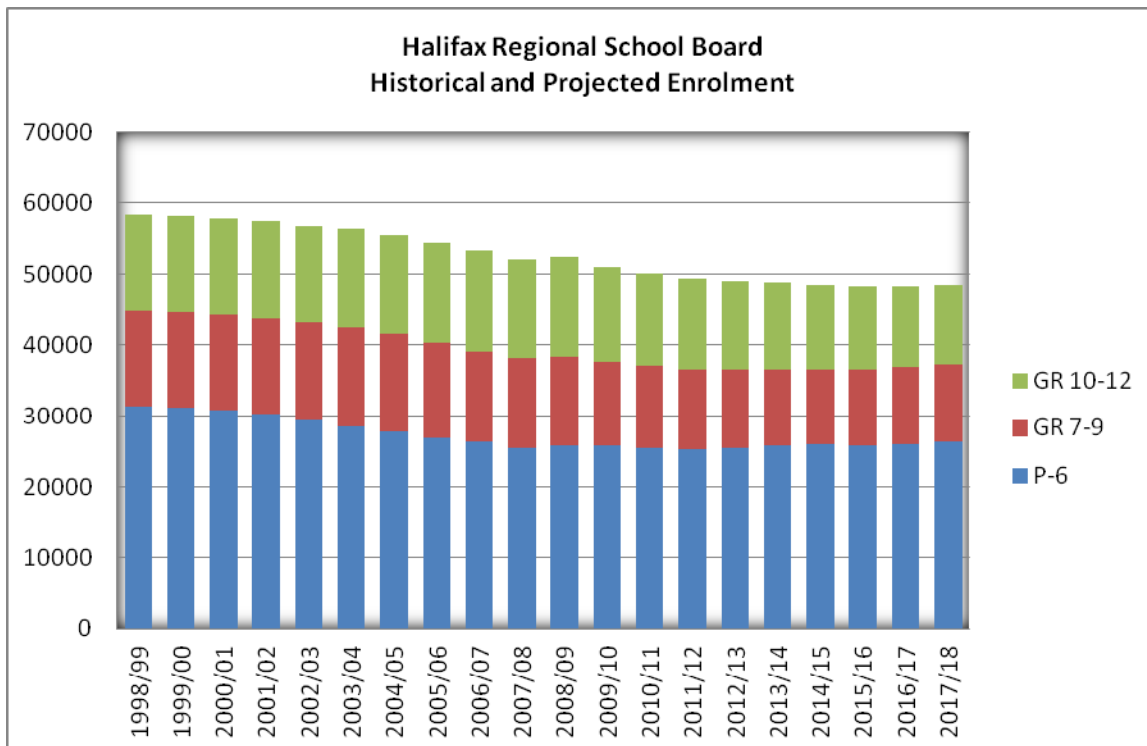
2.6 ENROLMENT

Enrolment projections are based upon the Cohort-Survival Method, which uses historical grade by grade enrolment to estimate a grade by grade projection for each program offered at a school. This method uses trends to identify the progression of students from one grade to the next higher grade. Other data sources, including historical migration rates (+/-) of the catchment area, analysis of out-of-area students, feeder school analysis, and an analysis of the Universal Child Benefit tax record and Canada Child Tax Benefit Tax records on a yearly basis are used to supplement the Cohort-Survival Method projections.

2.6.1 Historical and Projected Enrolment for HRSB 1998/1999 to 2017/2018

Over the past ten years, the total student enrolment in the Halifax Regional School Board has shown a steady decline. As of 2010/2011 enrolment has decreased by 8,128 students from the total enrolment of 58,297 in 1998/1999.

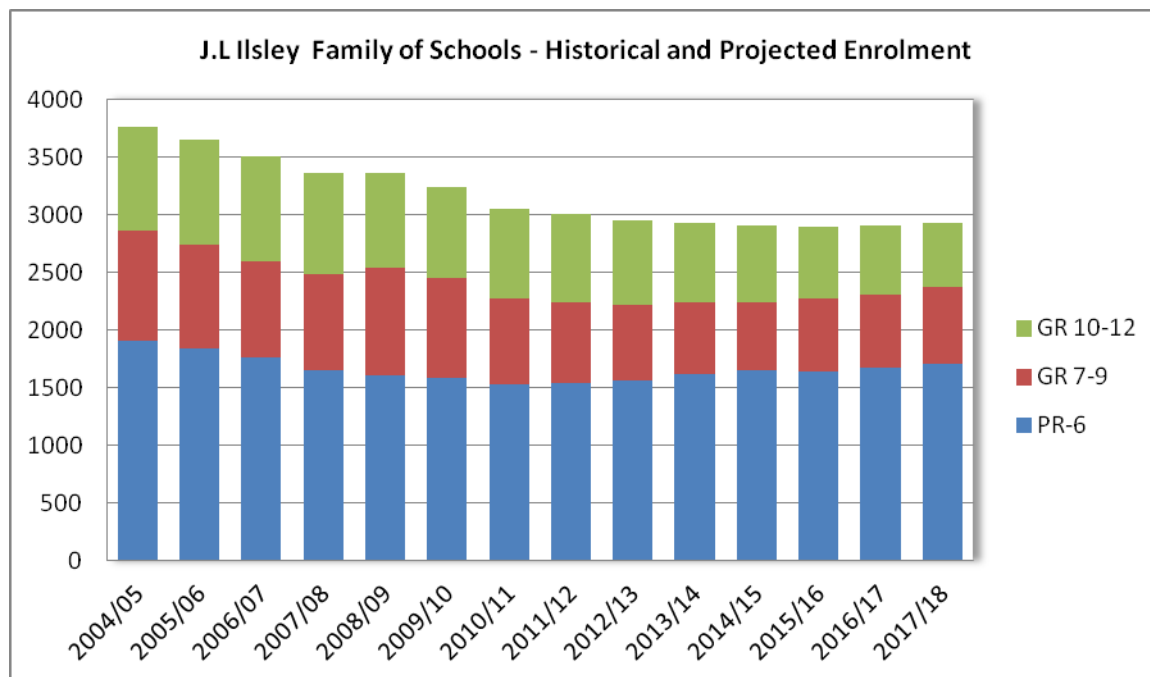
Over the next five to seven years, enrolments are estimated to continue to marginally decline with the most significant decline having occurred. The construction of new housing and a positive migration rate have helped mitigate some of the decline that has occurred during the past ten years. The projections indicate a decrease of approximately 1700 students from the registered enrolment of September 2010 to the projected enrolment of 2017.



Source: Halifax Regional School Board and Baragar Demographics

2.6.2 J.L. Ilsley Family of Schools Enrolment by Grade

The following charts outline the historical enrolment and the projected enrolment in the J.L Ilsley Family. According to this data the total enrolments will remain relatively constant with a slight decrease over the next 5 years.



Source: Halifax Regional School Board and Baragar Demographics

2.6.3 Central Spryfield Elementary School Historical and Projected Enrolments

Central Spryfield Elementary School provides regular programming for grades Primary to six. Actual enrolments are given through 2010 and projected enrolments are provided through 2015. Projections provided by Baragar Demographics.

Historical and Projected Enrolments of Central Spryfield Elementary School

	2006	2007	2008	2009	2010	2011	2012	2013	2014	2015
Primary	23	22	20	17	19	19	17	22	24	22
One	28	21	26	22	11	19	18	17	21	24
Two	28	25	14	24	20	9	16	15	14	17
Three	43	26	24	13	20	19	9	15	15	14
Four	29	37	20	21	13	21	20	10	16	16
Five	40	26	32	24	23	13	21	20	10	16
Six	20	33	23	32	22	21	12	19	18	8
Total	211	190	159	153	128	121	112	117	118	117

Source: Halifax Regional School Board and Baragar Demographics

2.6.4 Central Spryfield Elementary School In and Out of Boundary Details

Students attending Central Spryfield Elementary – September 2010

- 117 students living within the Central Spryfield Elementary School Boundary
- 11 students living in other elementary school boundaries
- Total of 128 students attending Central Spryfield Elementary as of September 30, 2010

Students living Central Spryfield Elementary – September 2010

- 117 students from the Central Spryfield Elementary School Boundary attend the school as of September 30, 2010
- 34 students from the Central Spryfield Elementary School Boundary attend other schools in English programming as of September 30, 2010
- 68 students from the Central Spryfield Elementary School Boundary attend other school in French Immersion programming as of September 30, 2010

2.6.5 Central Spryfield Elementary School Registered Enrolment for September 2011

The following registered enrolments for September 2011 are accurate as of April 30, 2011. The actual September 30, 2011 enrolments will be provided to the School Review Committee in October 2011.

Grade	Enrolment as of April 30, 2011
Primary	12
One	19
Two	13
Three	19
Four	21
Five	14
Six	23
Total	121

2.7 CAPITAL CONSTRUCTION PLANNING

2.7.1 Halifax Regional Municipality Regional Plan

Central Spryfield Elementary School and its catchment area are designated Urban Settlement in the HRM Regional Municipal Planning Strategy. The designation includes developed and undeveloped lands and includes six sites as potential areas for new urban growth.

Within each designation, there are a series of mixed use transit oriented centres. The Central Spryfield encatchment area is located in the suburban district centre. Permitted land uses in the suburban district include a mix of low, medium and high density residential, commercial, institutional and recreation uses. In established neighbourhoods low to medium density residential uses would be encouraged.

The HRM Regional Plan states that approximately 25% of the growth in the next 25 years will be targeted to occur in the Regional Centre, approximately 50% of the growth will occur in the suburban areas; and the remaining 25% will occur within the rural areas.

During the development of the Regional Plan, HRM had a demographic study prepared by Clayton Research. They found that the projected housing demand by type from 2001-2026 for the Suburban region to be:

Single and Semis:	18,851
Row:	735
Apartments and others:	11,013
Total:	30,599

2.7.2 HRM Facility Master Plan

The Communities Facilities Master Plan (CFMP) was approved in principle in May 2008. The objective of the CFMP is to specifically indicate where facilities will be constructed; which existing facilities will be improved; and joint school use agreements and partnerships for community facilities throughout HMR over the next 20 years.

The Municipality has indicated the Sackville area is well serviced and should Central Spryfield Elementary School be closed, the site would not be considered for community use. Should this site be returned to the Municipality, the real estate division of transportation public works would initiate a formal assessment regarding future use of the building and site.

2.7.3 Community Visioning

HRM has been undertaking visioning exercises to further develop ideas for identified growth centres within the HRM Regional Plan. To date, the visioning process has not been initiated for the Central Spryfield area.

2.7.4 Proposed Development

HRM Planning and Development Services have provided the following development numbers for the Central Spryfield and Elizabeth Sutherland catchment areas:

- July 2009 – June 2011 – 153 building permits issued – one multiple unit (20 unit) remainder were residential single unit dwellings or residential semi detached dwellings.
- Occupancy permits issued – 30
- Anticipated development (in process, not approved) – 15 -20 townhouses in Governors Brook

2.8 PHYSICAL CONDITION OF BUILDING

2.8.1 Condition of Building Envelope, Interior and Systems

A complete Building Audit and Expenditure Plan has been completed for Central Spryfield Elementary School and will be provided to the School Review Committee. The intent of the document is to provide a review of the existing building and to provide a capital building estimate that would be required for the continued operation of the school. The report concludes that an investment in capital of approximately \$1,284,900 is required to ensure the future use of the building.

2.8.2 Indoor Air Quality and Environmental Issues

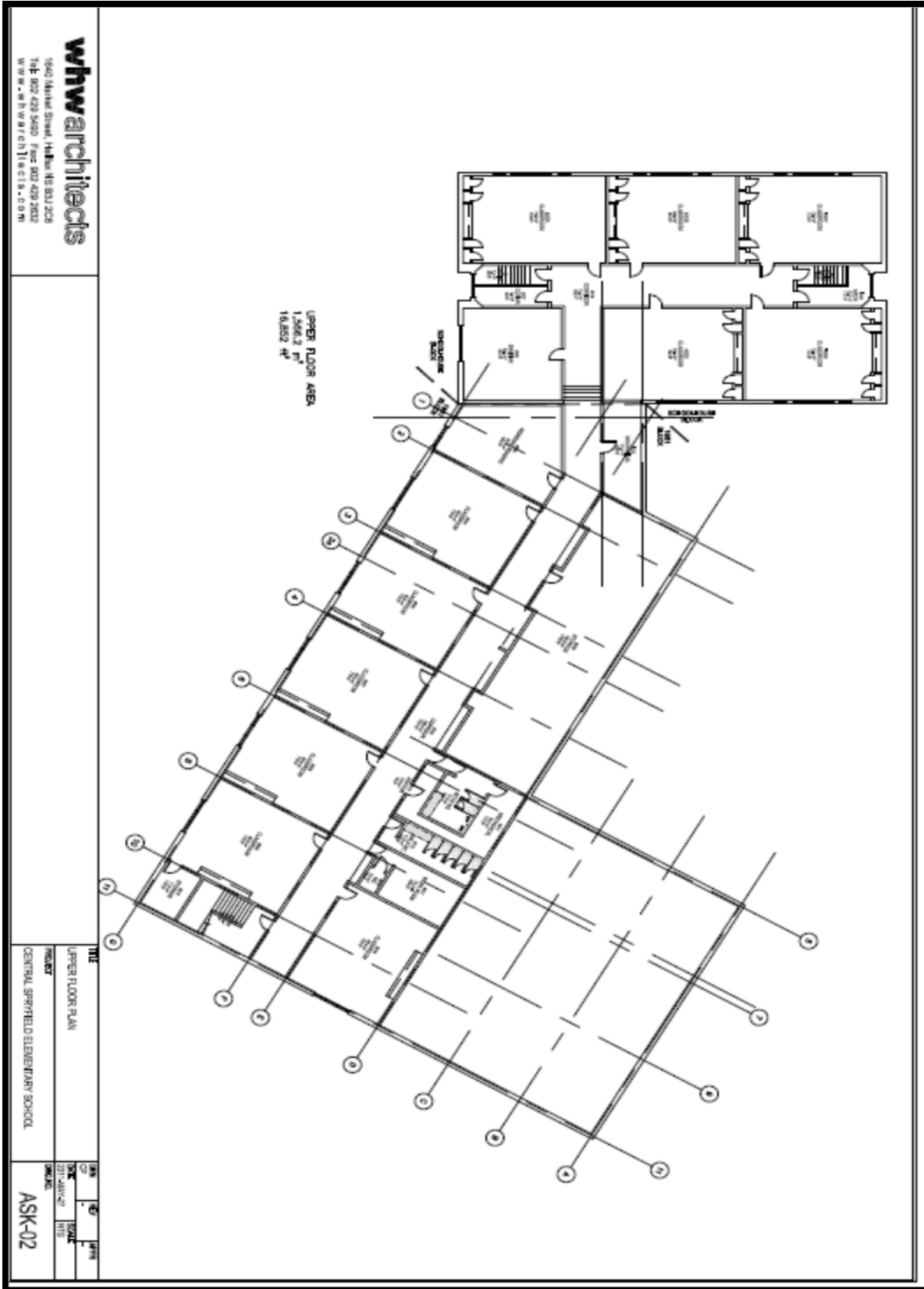
The Review Committee will be provided with any past investigations and reports regarding indoor air quality and environmental issues at Central Spryfield Elementary School.

2.8.3 Costs Associated with Maintenance, Repair and Operation

Costs	2009/2010	2010/2011
Utilities		
Phone	\$3,552.00	\$3,552.00
Power	\$19,054.07	\$16,309.10
Fuel	\$21,171.92	\$21,829.32
Water	\$3,761.68	\$5,917.68
Maintenance	\$11,966.20	\$12,266.20
Caretaker and Supplies	\$102,363.31	105,677.74
Total	\$161,869.18	\$165,552.04

2.8.4 Barrier Free Accessibility to Building and Grounds

Please refer to the Building Audit and Expenditure Plan



whwarchitects
 5640 Hamlet Street, Halifax, NS B3J 2C8
 TEL: 902 425 5480 FAX: 902 425 5432
 WWW.WHWARCHITECTS.COM

2.9.2 Building Details

Gross building square footage: 37,665 square feet

No. of storeys: 2

Building Age: 1940 and 1981(addition)

Accessibility: no

Elevator (Y/N): no

2.9.3 Teaching Spaces and Current Usage

Room	Intended Use	Current Use
Ground Floor		
100A	Sensory Room	Sensory Room
100B	Classroom	Learning Centre
100C	Classroom	Restricted use-lunchroom (4hr limit due to Radon)
100D	Classroom	Restricted use-lunchroom (4hr limit due to Radon)
103	Library	Library
113	Art Room	Art Room
116	Music Room	Music Room
Small spaces for office, caretaker, mechanical and storage.		
Upper Floor		
200A	Classroom	Resource
200B	Classroom	Math / Literacy Interventions
200C	Classroom	Classroom
200D	Classroom	Classroom
200E	Classroom	Classroom
204	Remedial Reading	Specialists access
205	Classroom	Classroom
206	Classroom	Classroom
207	Classroom	Classroom
208	Classroom	Classroom
209	Classroom	AV Room (LCD and 15 computers)
218	Classroom	Classroom
Small spaces for caretaker, mechanical and storage.		

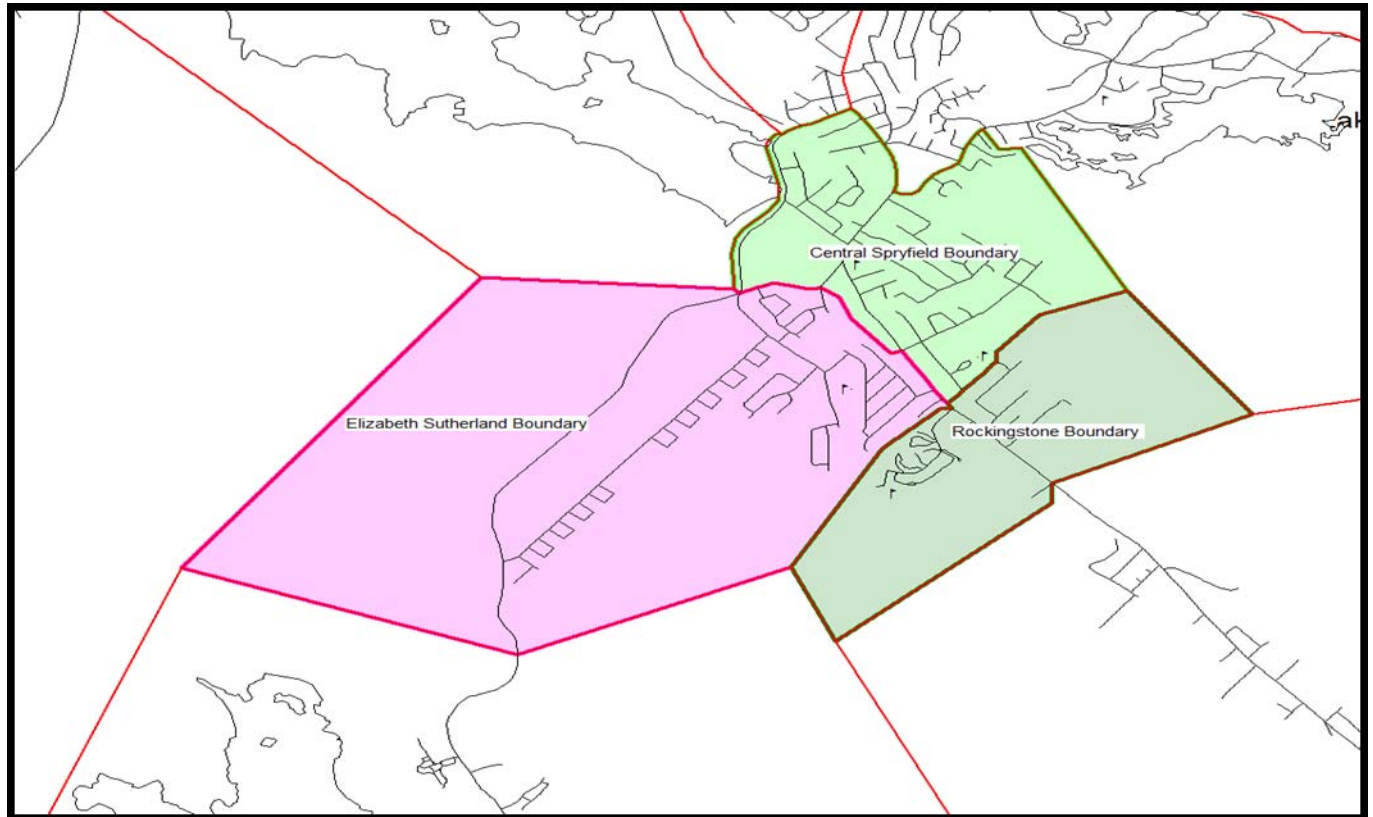
2.9.4 Excess Teaching Spaces

Central Spryfield has 14 classroom spaces and 7 specialty areas available.

Based on the current class configuration, Central Spryfield requires 6 of the 14 available classroom spaces leaving eight classroom spaces available for other uses (i.e. Resource, Lunch Room, AV room, etc.)

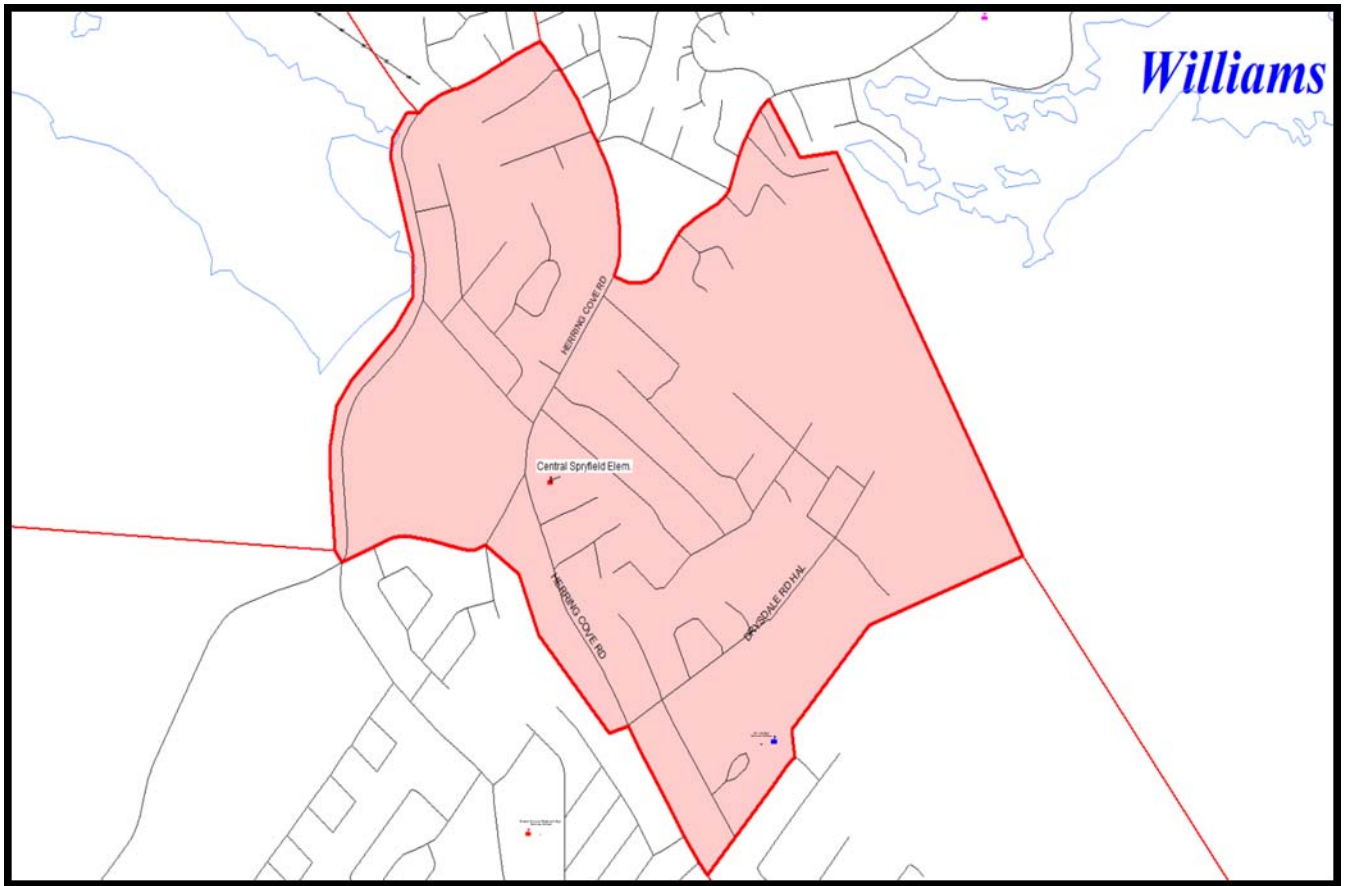
2.9.5 Central Spryfield Elementary School Boundary

Central Spryfield Area



Source: Halifax Regional School Board and Baragar Demographics

Existing Central Spryfield Boundary



Source: Halifax Regional School Board and Baragar Demographics

3.0 IMPACT ANALYSIS

3.1 CAPABILITY TO DELIVER PUBLIC SCHOOL PROGRAM

ABILITY AS A FACILITY TO DELIVER THE PUBLIC SCHOOL PROGRAM

Facility Program Delivery Review is a term used to define how well an educational facility serves the academic program being offered. It does not refer to the quality of the school’s academic programs or the success of its students measured by test scores. A Facility Program Delivery Review does not reflect the state of the physical plant of the building for architectural, structural, mechanical or electrical conditions.

A Facility Program Delivery Review was conducted by the consultants for all schools in the Imagine Our Schools planning process.

Facility Program Deliver Review Results for Central Spryfield Elementary School

Facility Program Delivery Review Observations					
	Poor	Fair	Average	Above Average	Excellent
Site Condition					
Educational Areas					
Classrooms					
Other Instructional Areas					
Library					
Gymnasium					
Support Areas					
Administration/Student Services					
Cafeteria/Food Services (none)					

3.1.2 Public School Programming

The following are details regarding Central Spryfield Elementary School's ability to deliver the public school program based on data from June 30, 2011. It is noted that Central Spryfield Elementary School is currently delivering the public school program as mandated by the Province.

- Pupil-Teacher Ratio = 20.2:1 (enrolment divided by classroom teachers only)
- Pupil-Staff Ratio = 9.6:1 (enrolment divided by all NSTU staff assigned to the school which includes Principals, Vice Principals, Circuit Teachers, Student Services Staff, ESL, Early Literacy Support, Math Mentors, etc.)
- Enrolment: 121
- Total Classes: 6
- Number of Combined Classes: 2
- Class sizes:

Primary /Grade 1	Grade 1/2	Grade 3	Grade 4	Grade 5	Grade 6
20	24	19	21	14	23

Program	Program Delivery Comments
General Classroom Program	Program is being delivered effectively.
Physical Education	Program is being delivered effectively.
Art	Program is being delivered effectively. Teacher has 3 schools on a circuit
Music	Program is being delivered effectively.
French Core	Program is being delivered effectively.
Computer Lab	AV room with 15 computers in extra classroom.
Learning Centre	Program is being delivered effectively.
Resource Room	Program is being delivered effectively.
Specialty Space	Provided in several individual spaces.
Library	Provided in a well equipped space.
Science Lab	N/A
Family Studies	N/A
Technology Education	N/A
Extra Curricular	Choir, Band, Strings, after-school Hockey, Girls Group, Book Club, Pals, Chess Club, and others as developed by staff.
Playground	Playground onsite. Currently damaged by vandals and off limits.
Field	Limited grassy area with steep incline, augmented by access to tennis courts.
Food services	Lunch Rooms provided in unused classrooms.

3.2 EDUCATIONAL BENEFITS

In general, the ability for a school to staff for specialty programs and extra-curricular activities is enhanced with larger student populations. This can occur because more teaching staff can be allocated to the school in either full time positions or they are in the school for longer periods of time as part of a circuit. While each individual student's exposure to certain subjects is defined by the curriculum offered and is consistent throughout the board, the fact that art, music, gym and French teachers are able to spend more time at a school with larger pupil numbers allows for the teachers to become more familiar with their students, enhances the ability for

extra-curricular offerings and enhances the ability for students with special interests in those subjects to be exposed to the subject(s) in more depth.

Possible Outcome: Central Spryfield Elementary remains open.

Central Spryfield Elementary School is currently delivering the needed educational support services and public school program. However the number of students attending the school is affecting the efficiency of delivering the program in such a large space. The school has ample room to effectively provide appropriate spaces for the library, specialty spaces, computers, French, music, art, and for the provision of lunch. The outdoor play area is limited and has limited opportunity to expand. While the programming is being delivered in adequate educational spaces, it is being delivered to a very small number of students in a school that was designed to accommodate substantially more pupils.

Possible Outcome: Central Spryfield Elementary is closed and the students attend Elizabeth Sutherland Elementary School.

Elizabeth Sutherland Elementary School is currently delivering the public school program effectively and would continue to do so with the addition of all of the projected 2012 enrolment from Central Spryfield Elementary School. It is a larger school than Central Spryfield and is equipped with a larger gymnasium and library. While some extra classes utilized by specialists would be returned to classroom use, ample space would remain and the school would not be at capacity.

3.3 TRANSPORTATION

Possible Outcome: Central Spryfield remains open.

Some bussing occurs at Central Spryfield and would continue.

Possible Outcome: Central Spryfield is closed and students attend Elizabeth Sutherland.

Some mandatory bussing would be required to Elizabeth Sutherland based on the current HRSB 2.4 km walking distance. Cost for transportation will be incurred by the Board as a result.

3.4 EXTRA-CURRICULAR ACTIVITIES

It should be noted that the delivery of extra – curricular activities at any school is dependent on the staff at the school in given year. The special interests and skills of the teaching staff along with their availability to provide extra-curricular activities generally define what is offered. Extra-curricular activities are often offered over lunch periods or after school.

Possible Outcome: Central Spryfield closes and the students are moved to Elizabeth Sutherland.

Students will be able to access the extra-curricular activities offered at Elizabeth Sutherland. The extra-curricular activities currently in place at Elizabeth Sutherland may be enhanced due to the addition of new teachers at that site.

3.5 OPERATIONAL AND CAPITAL REQUIREMENTS

3.5.1 Completed Capital Projects at Central Spryfield Elementary School

- Fire dept report 03/2010- paneling - \$8,684.78
- Installed time out room - \$8, 583.12
- Mit.sys or 2 – \$10,611.00
- Repointed brickwork - \$13,636.59
- Replace insulation on rooftop - \$12,000
- Window replacement - \$93, 864
- Roof replacement section D – \$96,000

3.5.2 Immediate Operating Needs (5 years)

If Central Spryfield were to remain open, the following deferred Maintenance and capital upgrades would need to occur over the next 5 years:

- Masonary wall repairs – \$23,000
- Install retaining wall - \$10,000
- Exterior doors - \$9,000
- Total - \$42,000.00

3.5.3 Capital Investments on Current Building

A complete Building Audit and Expenditure Plan has been completed for Central Spryfield Elementary School and will be provided to the School Review Committee. The intent of the document is to provide a review of the existing building and to provide a capital building estimate that would be required for the continued operation of the school. The report concludes that an investment in capital of approximately \$1,284,900 is required to ensure the future use of the building.

3.6 PROPERTY SERVICE EFFICIENCIES

The projected cost savings to the Board for each possible outcome of the review are listed below. Please note that administrative cost savings are not included in the calculations below.

Possible Outcome: Central Spryfield Elementary remains open

	Immediate Capital Costs 5 yr	Long Term Capital Costs 20 yr	Annual Operating Costs	Students	Annual Operating Costs/Student
Central Spryfield	\$42,000	\$1,284,900	\$165,552.04	128	\$1,293.37
Elizabeth Sutherland	\$1,287,900.00	\$1,408,300.00	\$256,018.46	276	\$927.60
Total Cost	\$1,329,900	\$2,693,200	\$421,570.50	404	\$1,043.49
Total Cost Savings	0	0	0		0

Possible Outcome: Central Spryfield is closed and students attend Elizabeth Sutherland School

	Immediate Capital Costs 5 yr	Long Term Capital Costs 20 yr	Annual Operating Costs	Students	Annual Operating Costs/Student
Central Spryfield	0	0	0	0	0
Elizabeth Sutherland	\$1,287,900.00	\$1,408,300.00	\$256,018.46	404	\$633.71
Total Cost	\$1,287,900.00	\$1,408,300.00	\$256,018.46		\$633.71
Total Cost Savings	\$42,000 over 5 years	\$1,284,900 over 20 years	\$165,552.04/year		

3.7 IMPACT ON THE COMMUNITY

If Central Spryfield Elementary School were to close, the impact on the community surrounding the school would be largely related to the school’s proximity and convenience to families that are experiencing socio-economic challenges.

3.8 COMMUNITY USE OF THE SCHOOL

From September 2010 to June 2010 the following activities occurred at Central Spryfield Elementary School. Source of this information is the HRSB/HRM Facilities Booking database.

Rooms: Gymnasium

Booked by: HRSB Basketball Season – Todd Umlah

Dates: September 22, 27, 29

October 1, 5, 7, 8, 12, 14, 15, 18, 19, 21, 25, 28, 29

November 1, 4, 5, 8, 9, 12, 15, 16, 18, 19, 22, 23, 25, 26, 29

December 2, 3, 6, 8, 9, 10, 13, 20

January 6, 7, 10, 12, 13, 14, 17, 19, 20, 24, 26, 27, 28, 31

February 2, 3, 4, 7, 8, 9, 10, 11, 28

March 2, 3, 4, 7, 9, 10, 11, 14, 16, 17, 18, 21, 23, 24, 28, 28, 30, 31

April 1, 4, 6, 7, 8, 11, 13, 14, 15, 18, 21, 27, 28, 29

May 2, 4, 5, 6, 18, 19, 20

June 1, 2, 3

Times: 6:00 p.m. to 7:30 p.m.

6:00 p.m. to 9:00 p.m.

Rooms: Gymnasium

Booked by: FA/11WI 2010-001 – Karen Lowery

Dates: October 5, 12, 19, 26

November 9, 16, 23, 30,

Times: 6:00 p.m. to 8:00 p.m.

Rooms: Gymnasium

Booked by: HRSB Volleyball Season – Krista Forbes

Dates: January 4, 5, 10, 12, 17, 18, 19, 24

February 1, 2, 8, 9

March 1, 2, 8, 9, 15,

Times: 7:30 p.m. to 10:00 p.m.

Rooms: Gymnasium

Booked by: HRSB Dryland Fitness – Shawna Taylor

Dates: October 19, 26

November 9, 23

January 4, 18

February 1, 8,

March 1, 15, 29

Times: 8:00 p.m. to 10:00 p.m.

3.9 IMPACT OF POTENTIAL CONSOLIDATION (IF APPLICABLE)

N/A

4.0 PROPOSED RECEIVING SCHOOL INFORMATION

4.1 SCHOOL NAME

Elizabeth Sutherland School

4.2 SCHOOL LOCATION

66 Rockingstone Rd
Halifax, NS B3R 2C9

4.3 ADMINISTRATION

Principal: Frank Covey
Vice Principal: Paul Betuik

4.4 ENROLMENT

4.4.1 Elizabeth Sutherland School Historical and Projected Enrolments

Actual enrolments are given through 2010 and projected enrolments are provided through 2015. Projections provided by Baragar Demographics.

Historical and Projected Enrolments for Elizabeth Sutherland School

	2006	2007	2008	2009	2010	2011	2012	2013	2014	2015
Primary	19	6	17	25	12	12	19	19	20	22
One	23	20	4	20	26	15	14	22	22	23
Two	14	20	18	4	20	25	14	13	20	20
Three	16	16	19	20	7	21	25	15	14	21
Four	28	22	18	19	23	9	23	27	16	16
Five	21	25	22	19	21	24	9	23	28	17
Six	26	28	29	24	19	22	25	10	24	28
Seven	65	62	54	57	42	56	42	55	35	65
Eight	41	66	65	48	58	40	52	38	52	33
Nine	69	38	68	62	48	56	38	48	36	49
Total	322	303	314	298	276	280	261	270	267	294

Source: Halifax Regional School Board and Baragar Demographics

4.4.2 Elizabeth Sutherland School In and Out of Boundary Details

Students attending Elizabeth Sutherland School – September 2010

- 185 students living within the Elizabeth Sutherland School Boundary
- 91 students living in other school boundaries – 55 students are attending French Immersion Programming
- Total of 276 students attending Elizabeth Sutherland Elementary as of September 30, 2010

Students living in Elizabeth Sutherland Boundary – September 2010

- 185 students from the Elizabeth Sutherland School Boundary attend the school as of September 30, 2010
- 12 students from the Elizabeth Sutherland School Boundary attend other schools in English programming as of September 30, 2010
- 17 students from the Elizabeth Sutherland School Boundary attend other school in French Immersion programming as of September 30, 2010

4.4.3 Elizabeth Sutherland School Registered Enrolment for September 2011

The following registered enrolments for September 2011 are accurate as of April 30, 2011. The actual September 30, 2011 enrolments will be provided to the School Review Committee in October 2011.

Grade	April 30, 2011 Registered Enrolment for September 2011
Primary	7
One	14
Two	26
Three	20
Four	7
Five	23
Six	21
Seven	53
Eight	42
Nine	55
Total	268

4.4.4 Impact of the Review Outcome on Elizabeth Sutherland School

If Central Spryfield Elementary School were to close effective September 2012, the entire student population would be assigned to Elizabeth Sutherland School. Elizabeth Sutherland School currently delivers the public school program effectively and has the space to provide specialty courses in unused classrooms. Elizabeth Sutherland would be able to accommodate the students from Central Spryfield and continue to effectively deliver the public school program. A larger student population will allow for increased staffing allocations for specialty subjects. The additional population of elementary students from Central Spryfield would have a positive impact on the configuration of elementary homerooms, reducing the number of combined classes from 3 to 1. The combined configuration would also result in a reduction to teaching staff allocations.

4.5 SCHOOL CONFIGURATION

Primary to Grade 9

Regular English Program

Early French Immersion Program – Grade 7 to 9

4.6 PHYSICAL CONDITION OF THE BUILDING

4.6.1 Facility Utilization

Capacity: 530

Enrolment September 30, 2010: 276

Utilization September 30, 2010: 52%

4.6.2 Condition of Building Structure and Systems

Completed Capital Projects at Elizabeth Sutherland

- Paving patchwork - \$6458.00
- Roof Replacement – \$128,235

Deferred Maintenance and Required Capital Upgrades over the next 5 years

- Roof section replacement - \$153,000
- Doors and window weather striping - \$15,000
- Refinish gym floor - \$15,000
- Brick repointing - \$15,000
- Exterior walls – \$119,900.00
- Roof Coverings - \$623,700
- Exterior doors - \$126,300.00
- Heat Generation - \$220,000.00
- **Total = \$1,287,900.00**

Required Capital Upgrades

A complete Building Audit and Expenditure Plan have been completed for Elizabeth Sutherland School and will be provided to the School Review Committee. The intent of the document is to provide a review of the existing building and to provide a capital building estimate that would be required for the continued operation of the school. The report concludes that an investment in capital of approximately \$2,371,000.00 is required to ensure the future use of the building.

4.6.3 Costs Associated With Maintenance and Operation

Costs	2009/2010	2010/2011
Utilities		
Phone	\$7,320.00	\$7,320.00
Power	\$35,495.42	\$35,892.43
Fuel	\$38,666.27	\$49,225.13
Water	\$6,817.99	\$4,442.81
Maintenance	\$16,464.43	\$17,164.30
Caretaker and Supplies	\$139,706.63	\$141,973.79
Total	\$244,470.74	\$256,018.46

4.6.4 Operation and Availability of Accessibility Ramps, Elevators, Accessible Playgrounds

Please refer to the Building Audit and Expenditure Plan

4.7 BUILDING USE

4.7.1 Excess Space

Number of students as of September 30, 2010 = 276

Square footage = 54,675 square feet

4.7.2 Teaching Spaces and Current Usage

Room	Intended Use	Current Use
Main Floor		
1003	Classroom	Extra Classroom
1004	Classroom	Classroom
1005	Classroom	Classroom
1009	Classroom	Classroom
1010	Classroom	Extra Classroom
1011	Classroom	Classroom
1012	Classroom	Classroom
1019	Classroom	Learning Centre
1020	Classroom	Learning Centre
1021	Classroom	Lunch Room
1022	Classroom	Classroom
1023	Classroom	Classroom
1024	Classroom	Classroom
1034	Lunch Room	Lunch Room
1029	Computer Lab	Computer Lab
1030	Remedial Room	Resource
1056	Art Room	Art Room
1052	Music Room	Music Room
1102	Food Lab	Food Lab
1122	Library	Library
1127	Small Group Work Room	Seminar Room
1128	Classroom	Classroom
1129	Classroom	Classroom
1130	Science Lab	Science Lab
1135	Classroom	Classroom
1136	Classroom	Classroom
1139	Classroom	Classroom
1140	Classroom	Classroom
1143	Classroom	Classroom
1155	Gymnasium	Gymnasium
Multiple Small spaces for office, caretaker, mechanical and storage.		

4.7.3 Impact of Increased Number of Students on Building Usage

If Elizabeth Sutherland were to receive the entire projected 2012 enrolment of 115 from Central Spryfield it would result in approximately 332 students in Elizabeth Sutherland Elementary School which would require a total of 16 classrooms. There would likely be 1 combined class depending on the configurations at that time which is a reduction from the current two combined classes in 2011-2012 configuration. Elizabeth Sutherland Elementary School would not be operating at its capacity and some classrooms that are currently being used for specialty spaces would remain and would allow for future student growth from within the expanded Elizabeth Sutherland Elementary School boundary.

A projection to 2015 demonstrates a further increase to a population of 351 and 17 classes. It is important to note that this boundary change would see the students of Central Spryfield remain at Elizabeth Sutherland for Junior High, which results in a significant reduction to the junior high population of Rockingstone School.

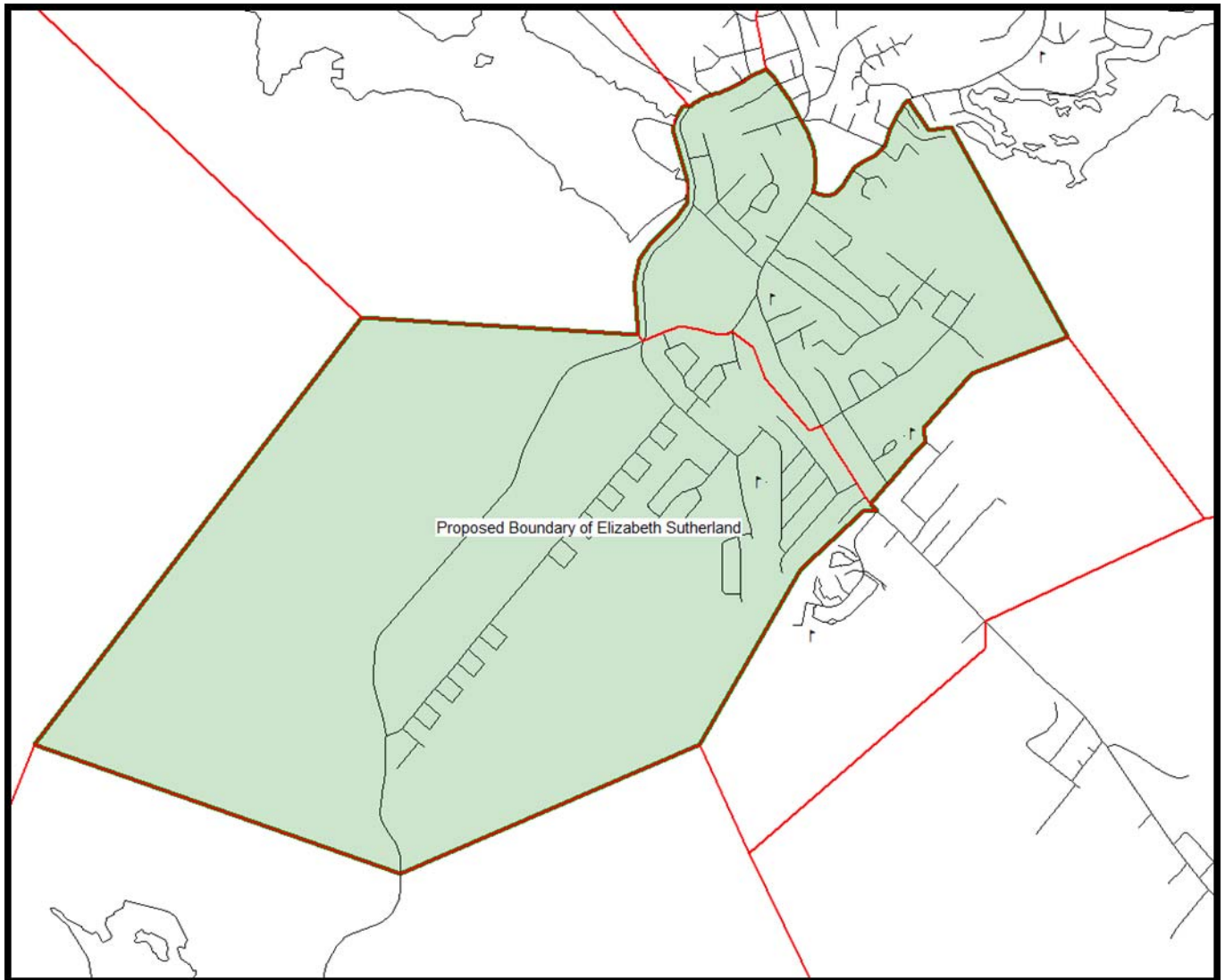
4.8 TRANSPORTATION

Currently, there are some students who qualify for bussing on distance attending Elizabeth Sutherland School.

4.9 PROPOSED ATTENDANCE BOUNDARY

If Central Spryfield Elementary School were to close with students being redirected to Elizabeth Sutherland School the new boundary would be as shown below.

Proposed Boundary of Elizabeth Sutherland – Central Spryfield and Elizabeth Sutherland



Source: Halifax Regional School Board and Baragar Demographics

SUPPLEMENTARY INFORMATION